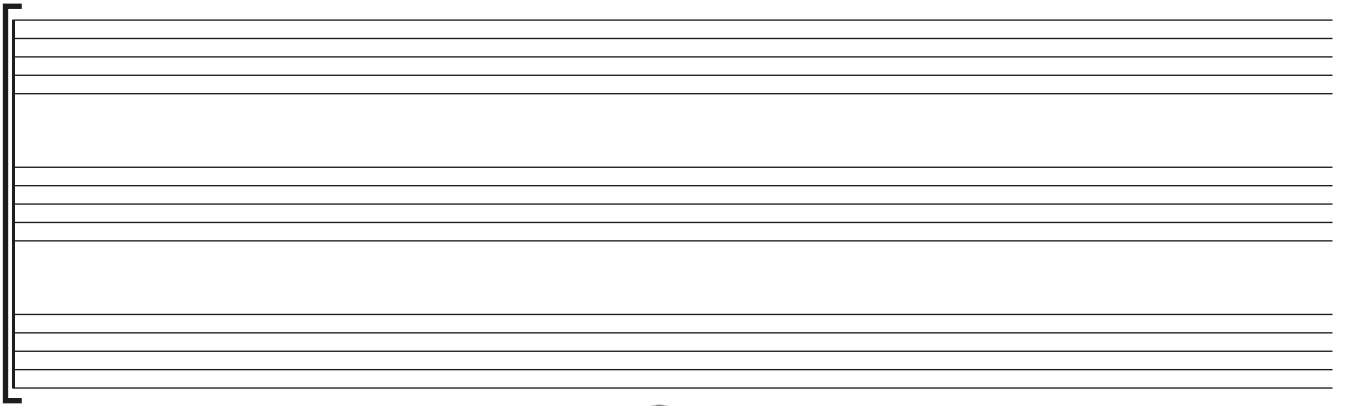
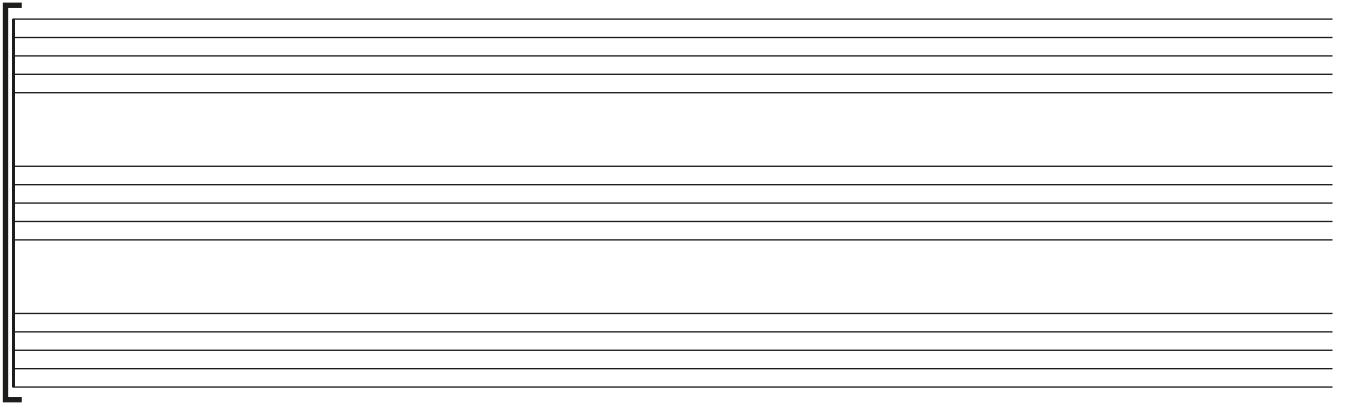
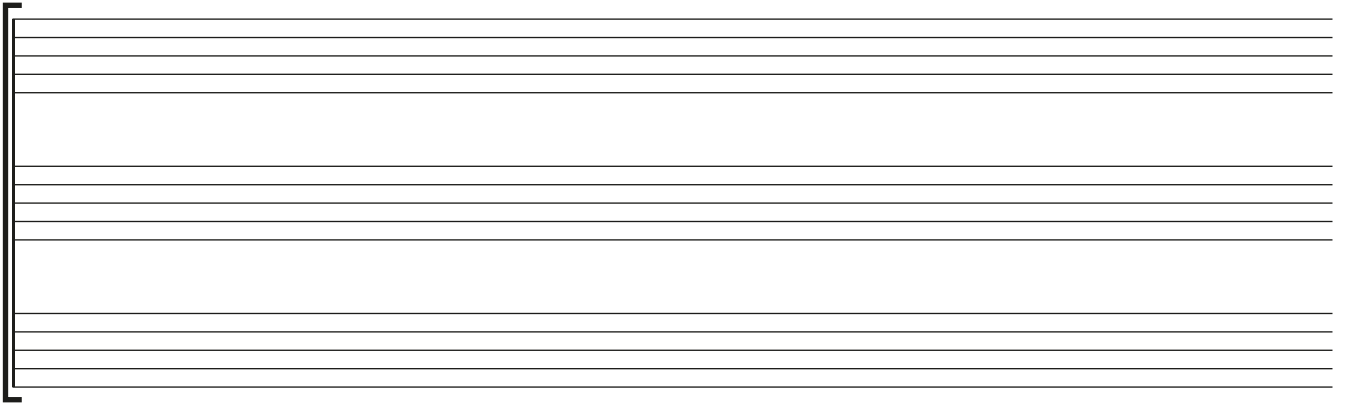
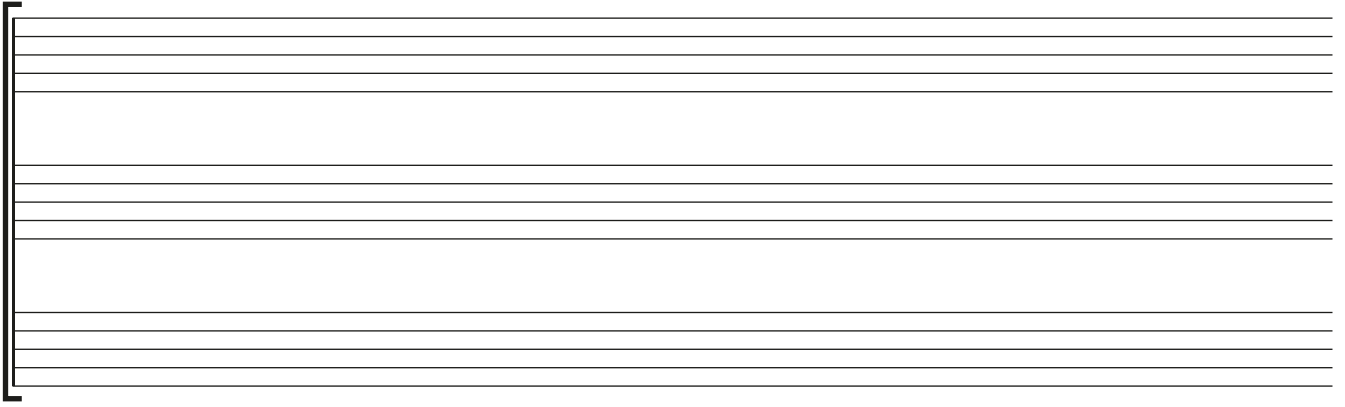
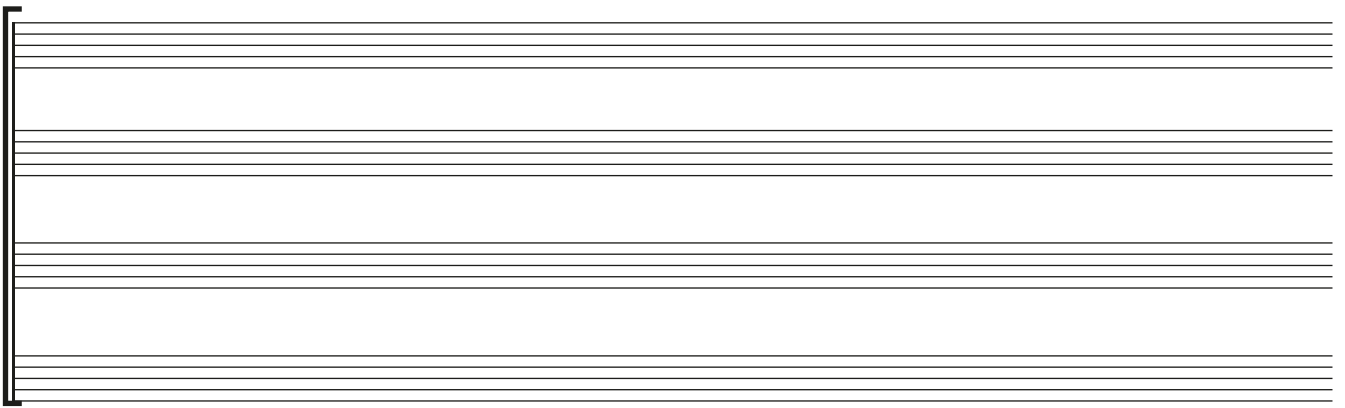
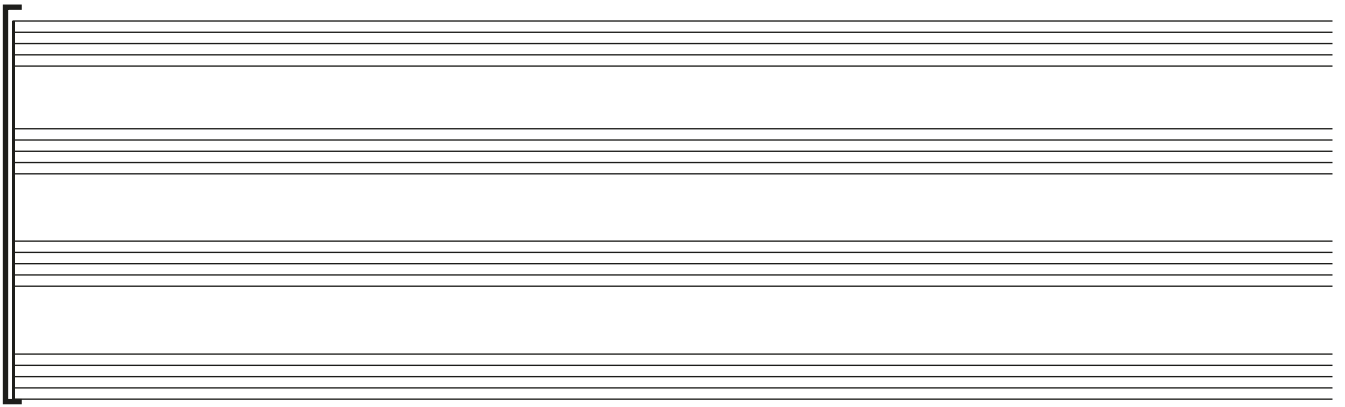
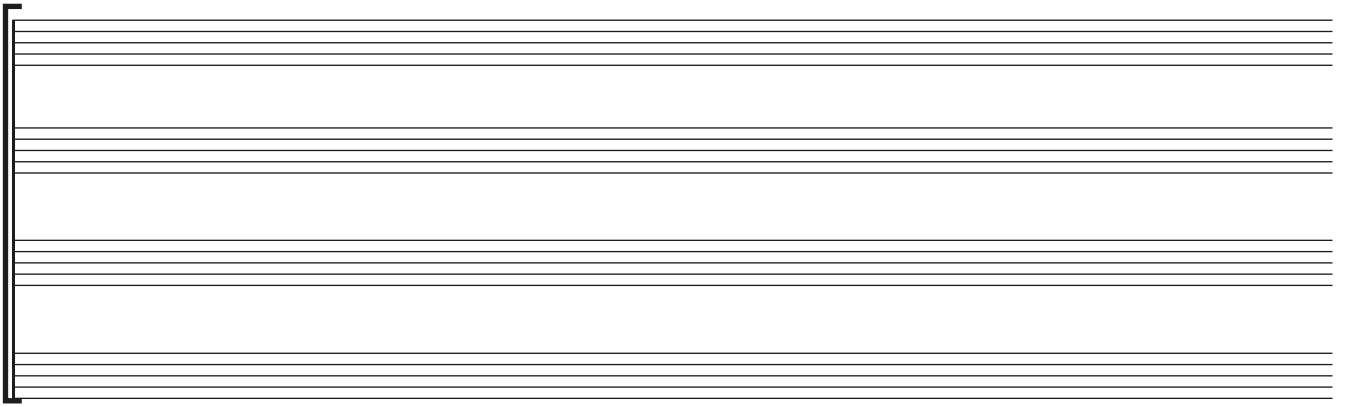
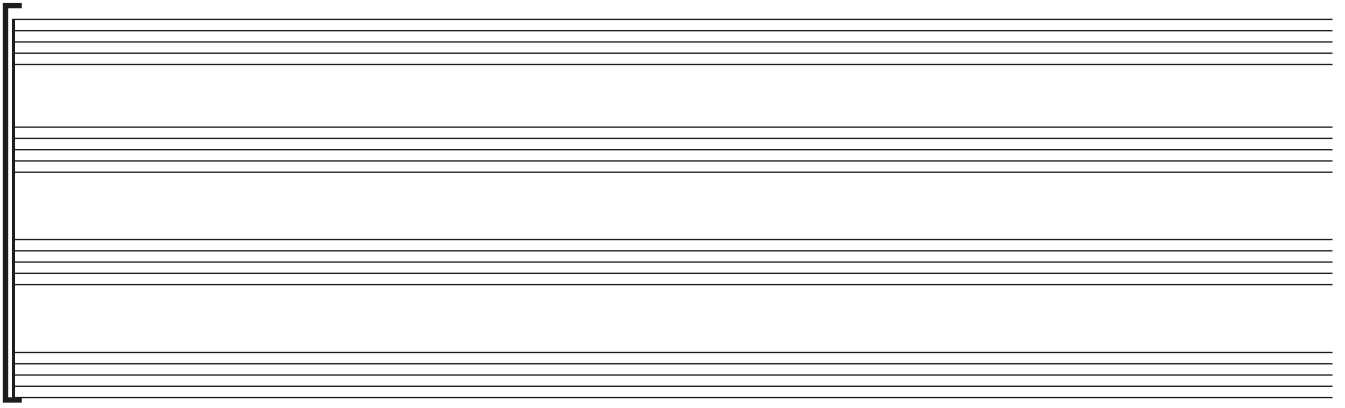


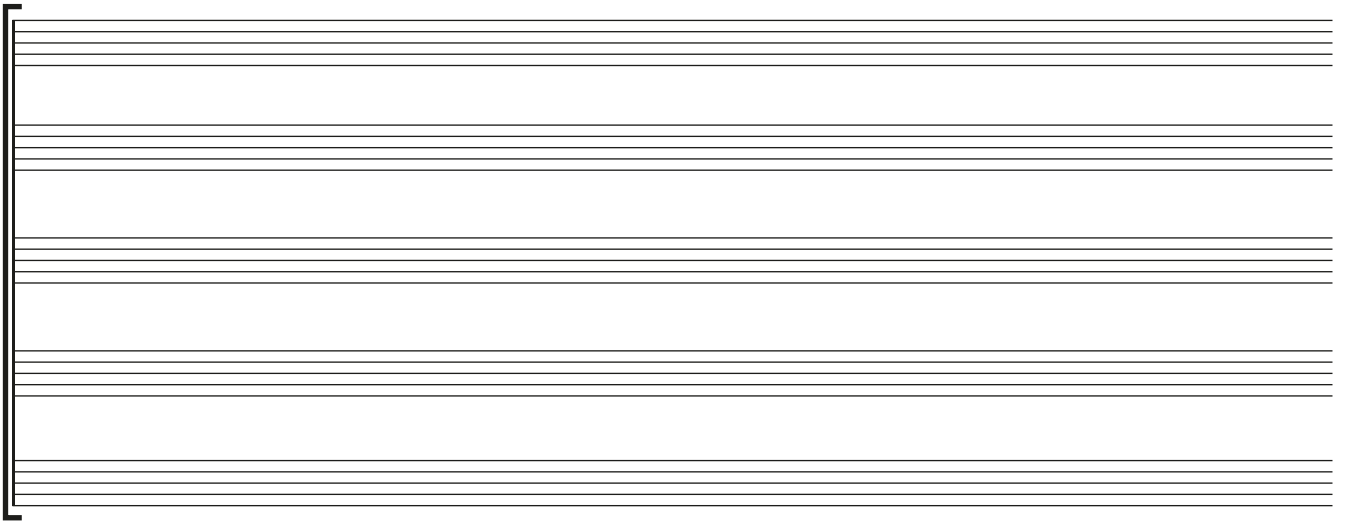
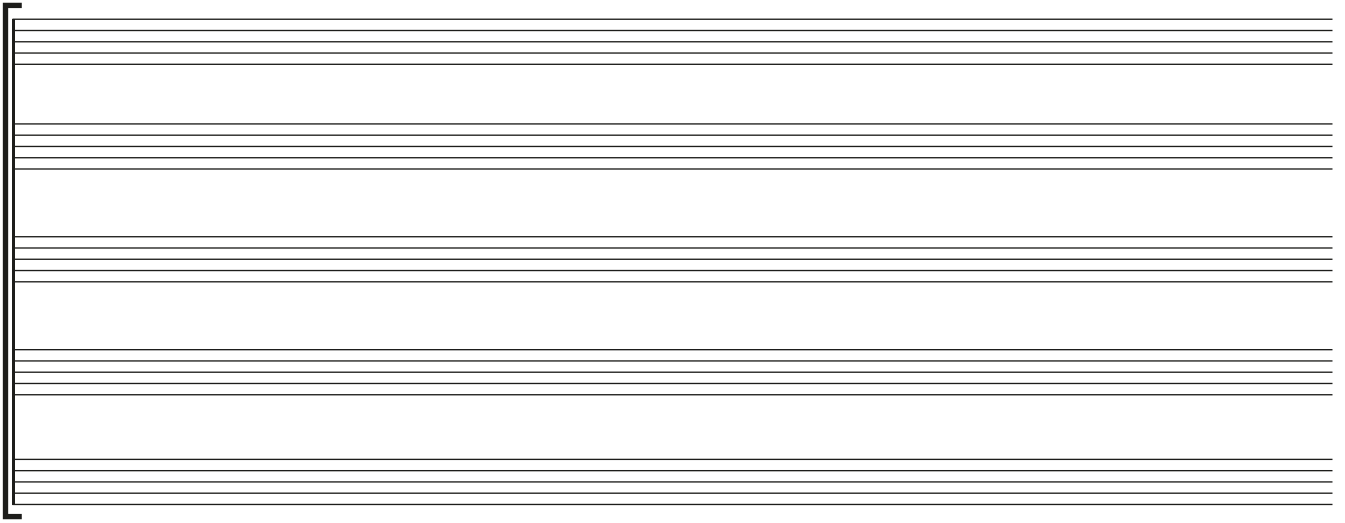
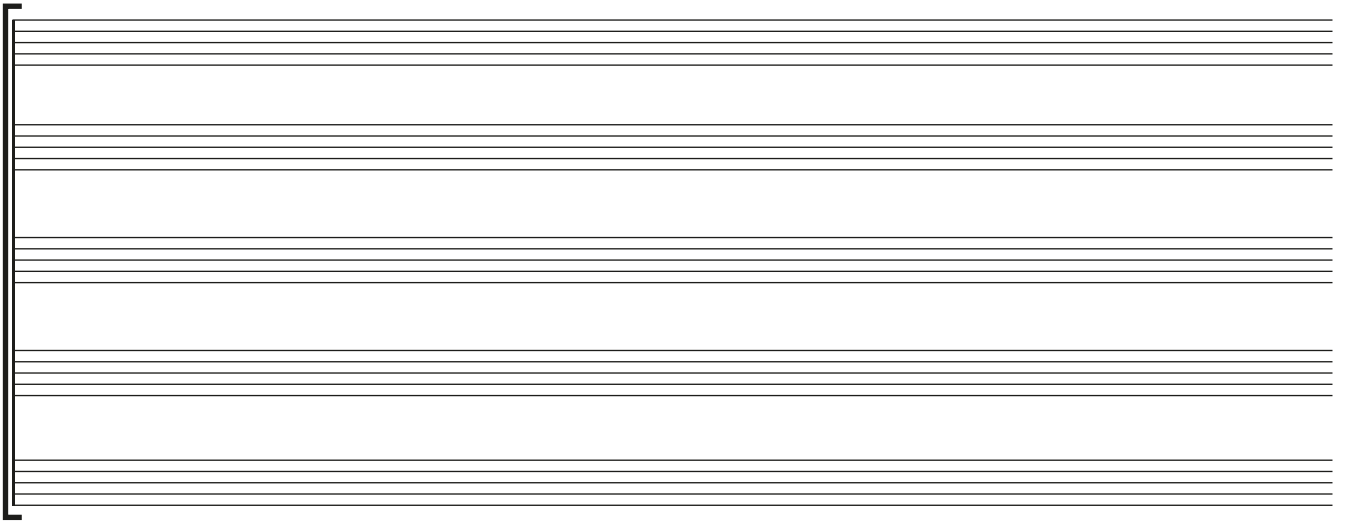
--	--	--	--	--	--

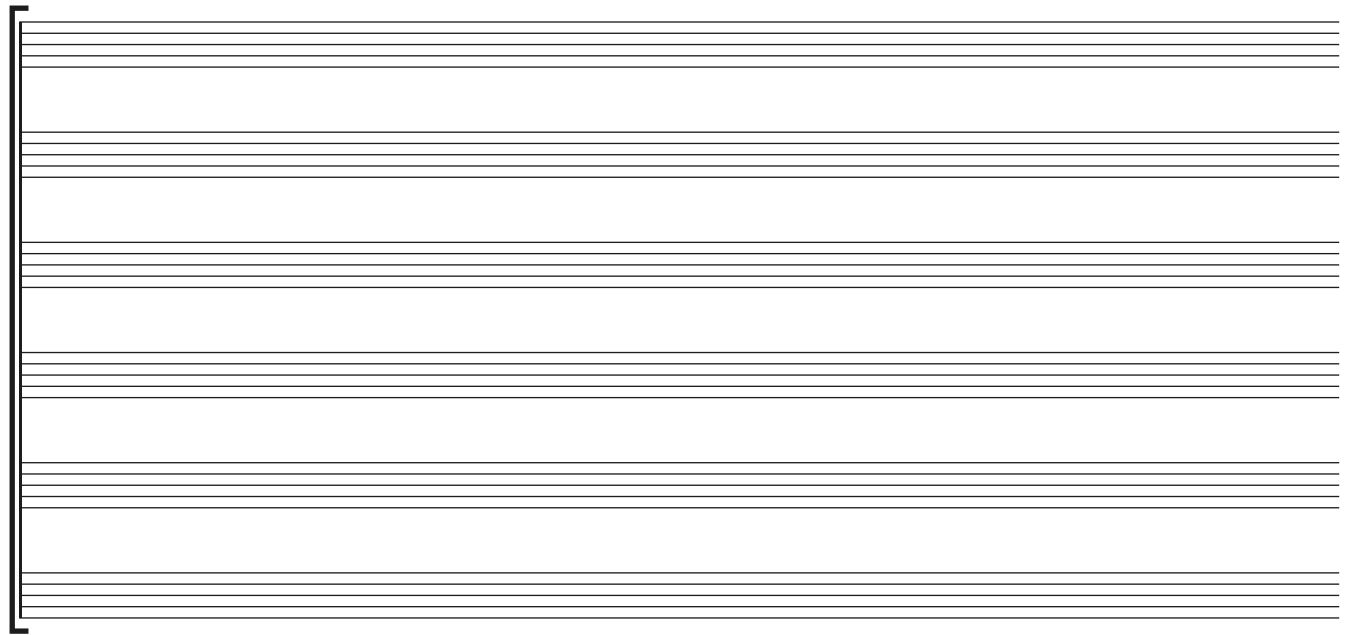
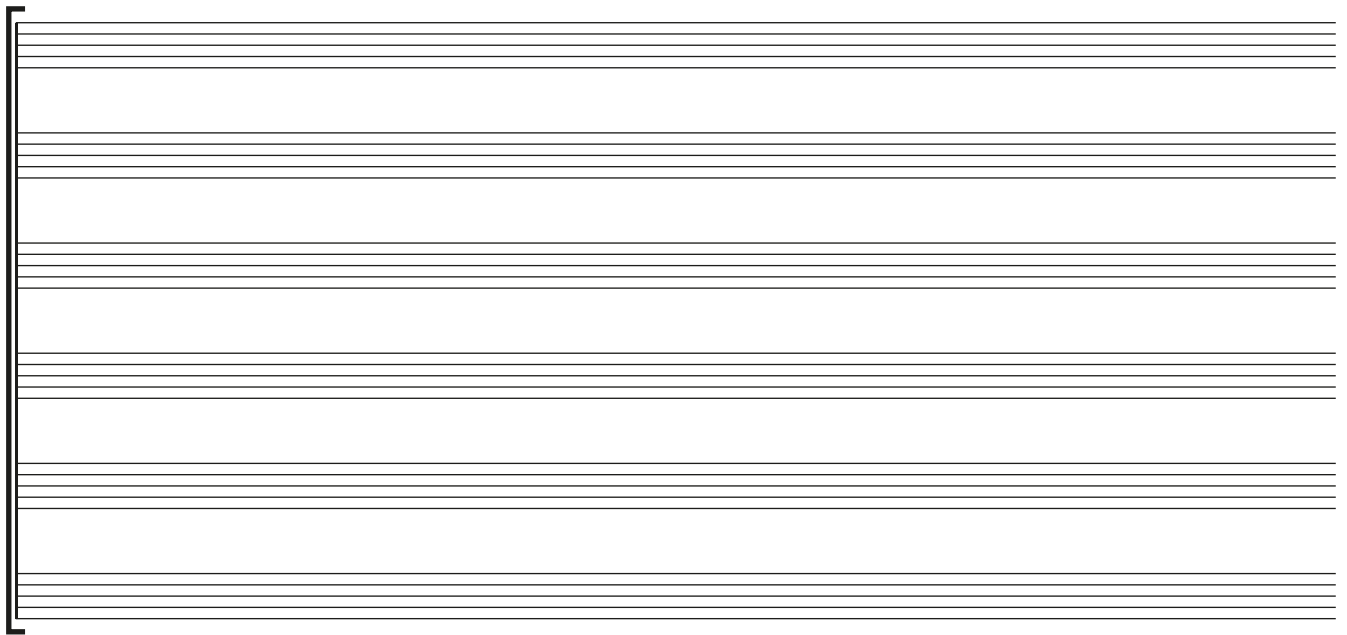
--	--	--	--	--	--











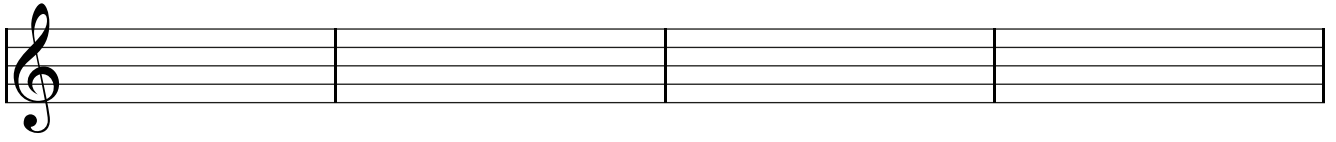
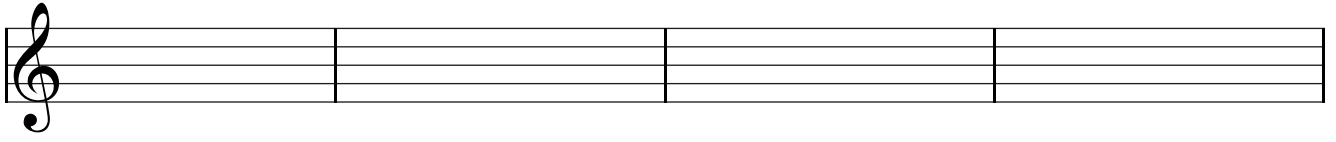
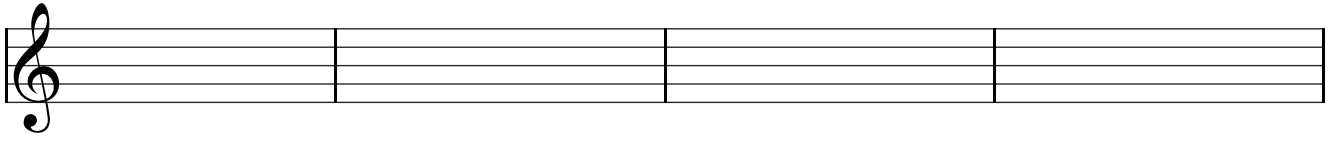
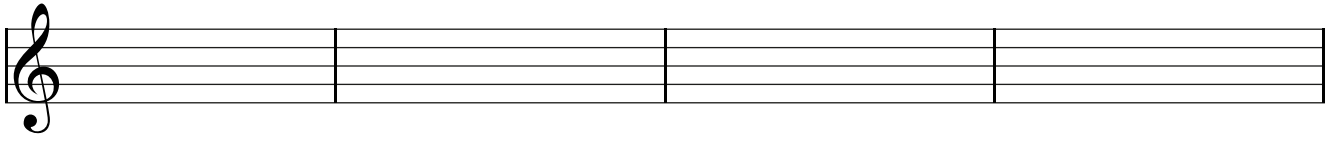
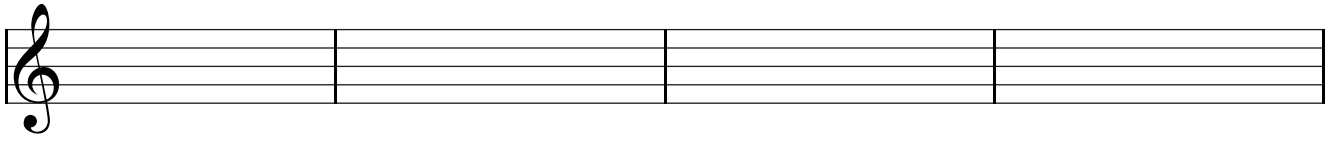
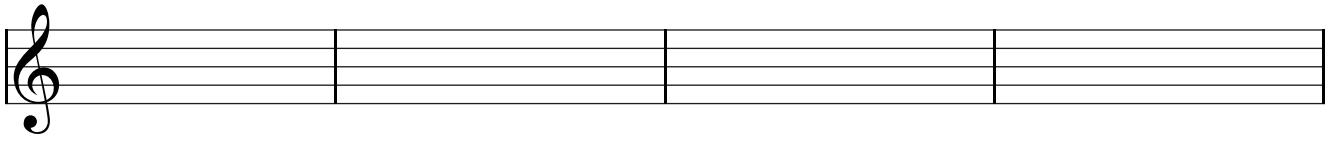
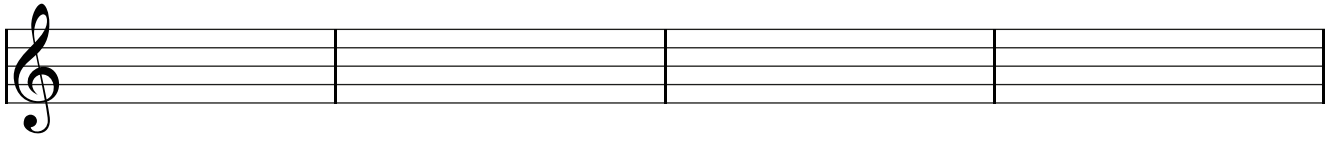
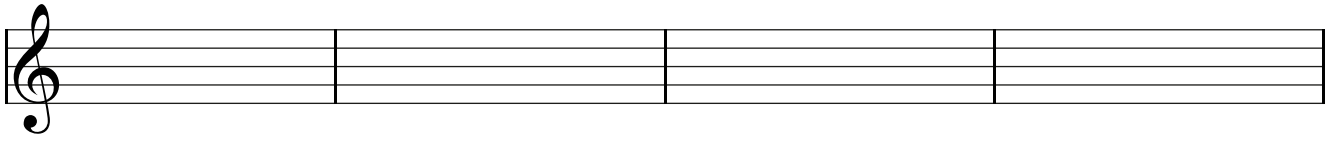
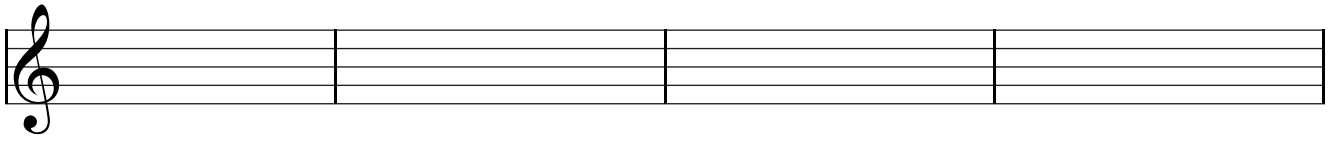
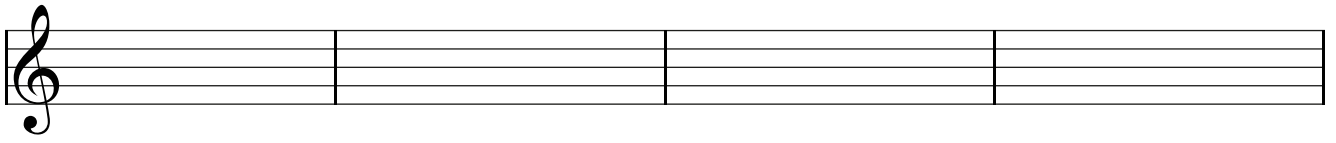
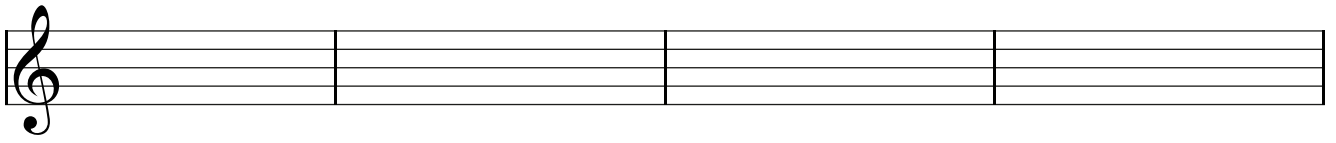


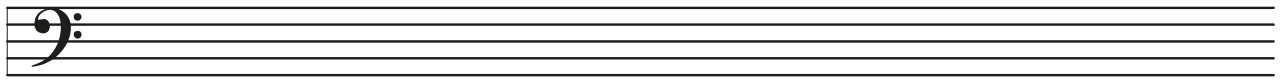
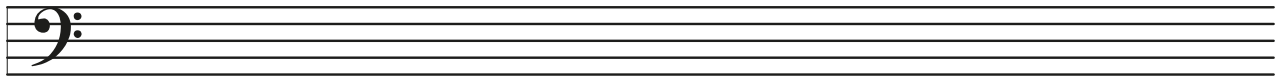
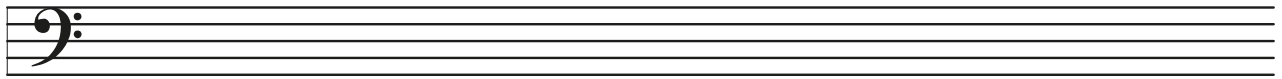
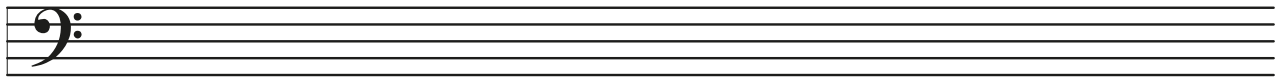
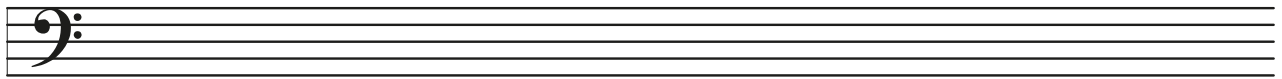
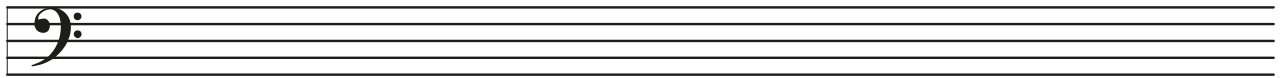
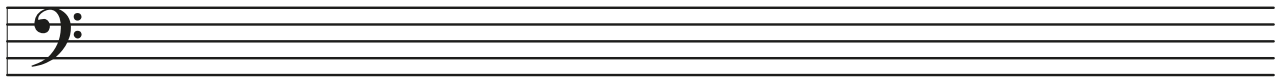
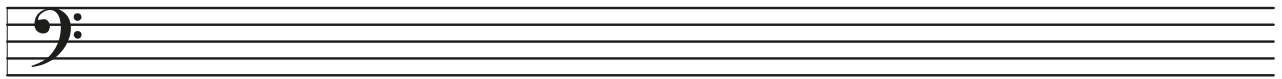
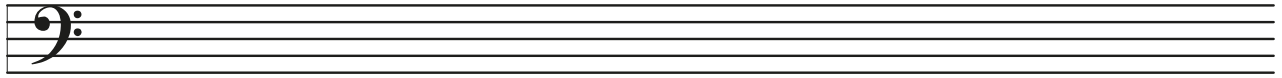
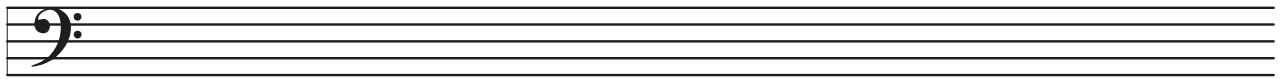
Handwriting practice sheet for musical notation. The page contains ten blank musical staves, each consisting of five horizontal lines. Each staff begins with a treble clef symbol on the left side. The staves are arranged vertically down the page.

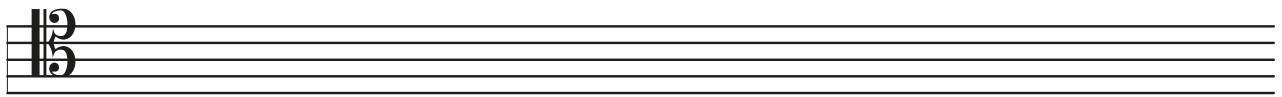
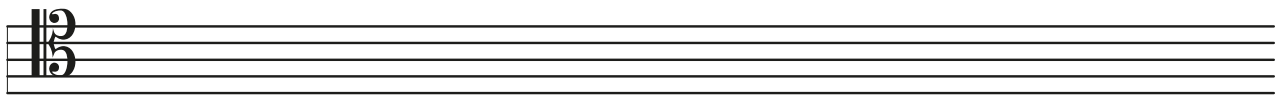
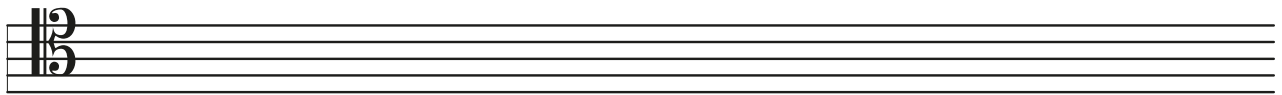
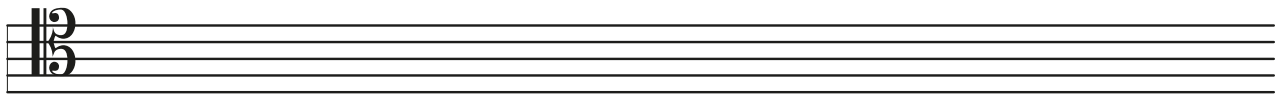
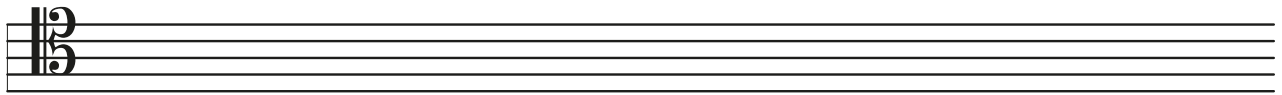
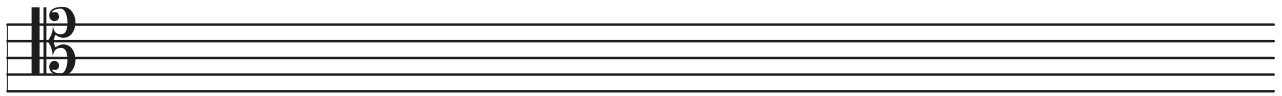
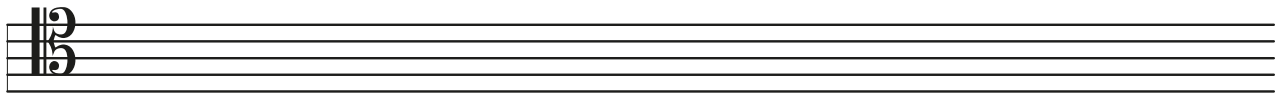
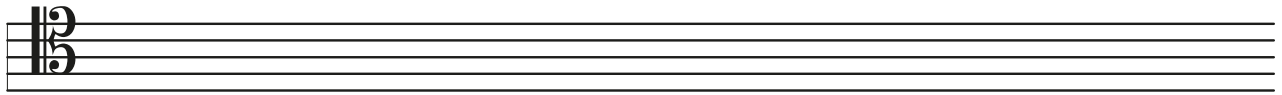
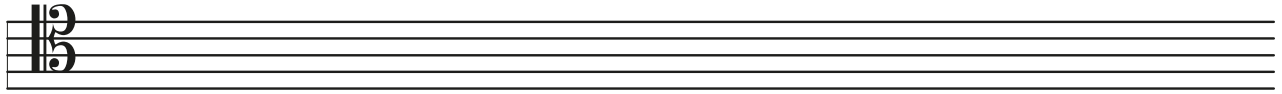
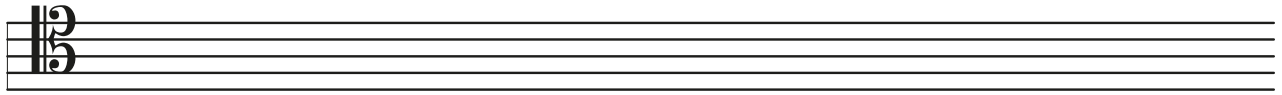


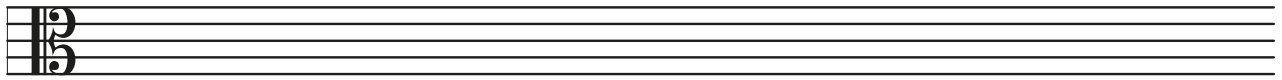
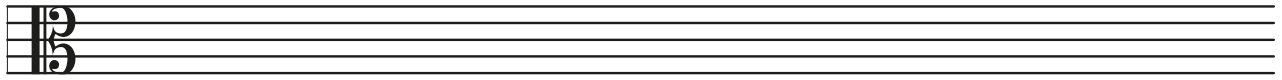
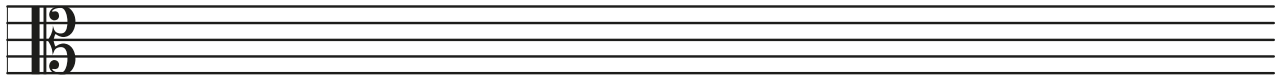
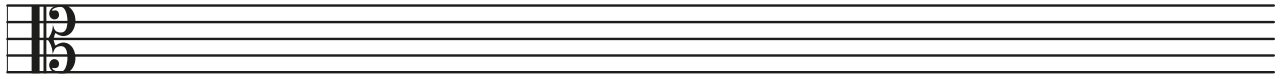
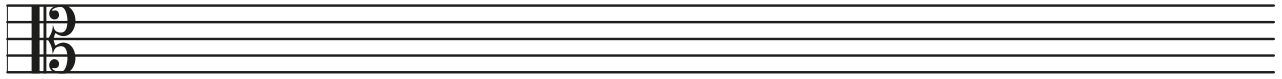
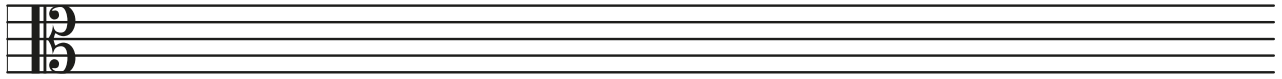
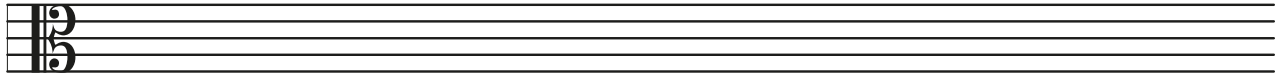
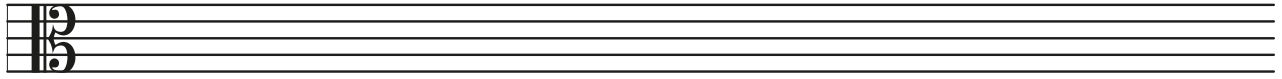
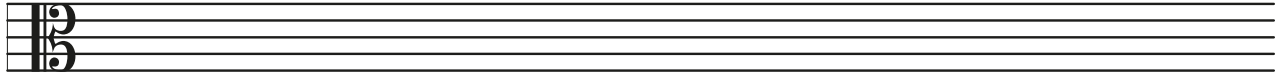
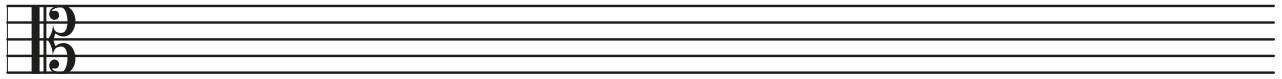
A page of ten blank musical staves, each with a treble clef on the left side. The staves are arranged vertically and are completely empty of any musical notation.

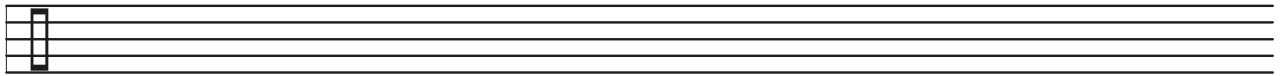
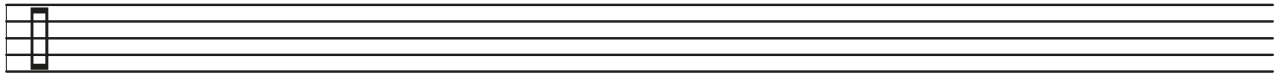
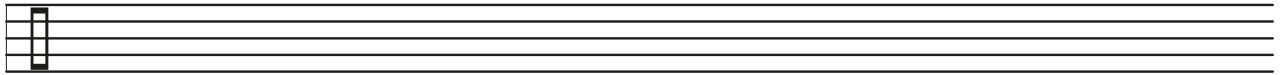
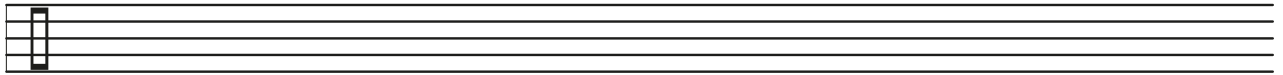
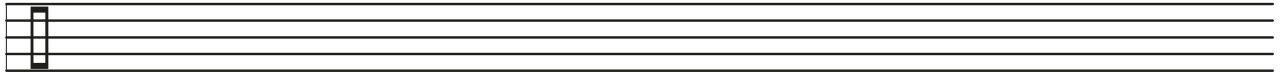
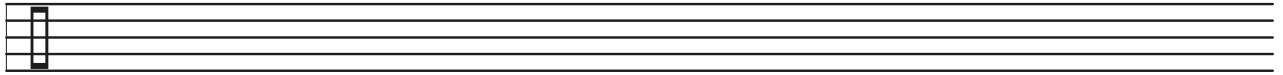
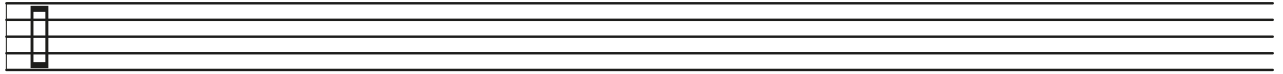
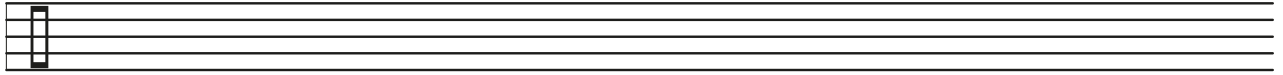
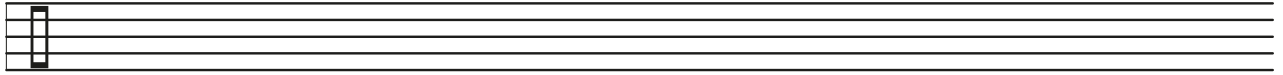
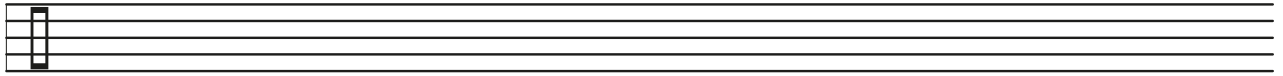


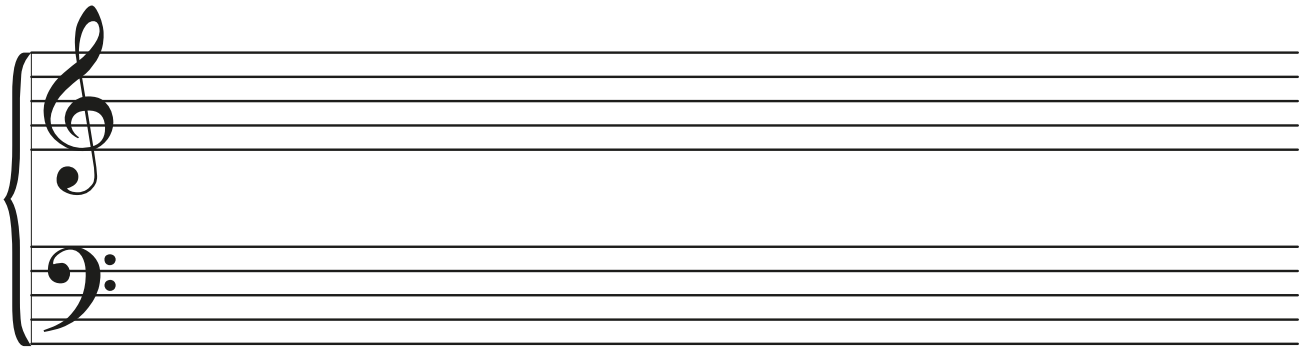
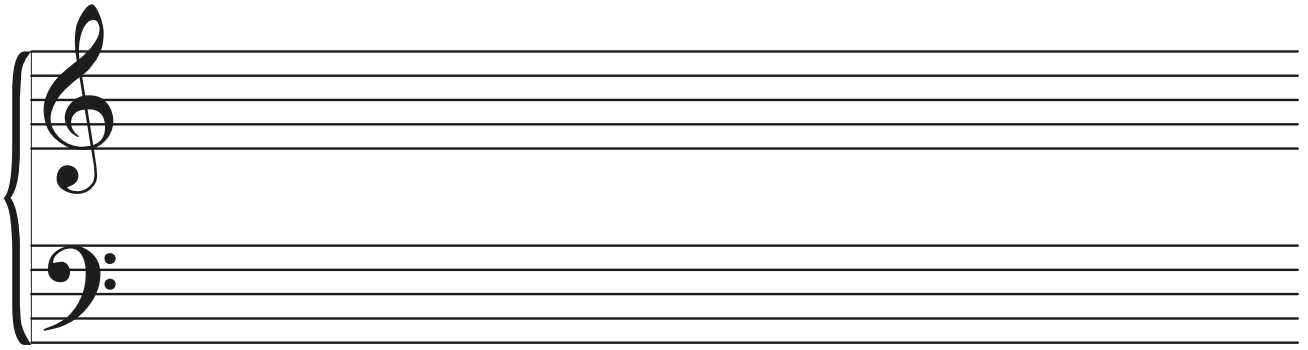
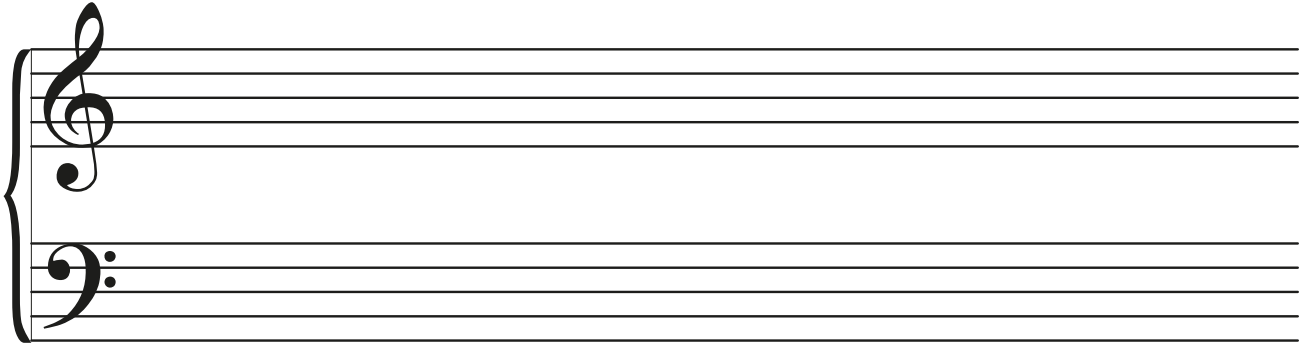
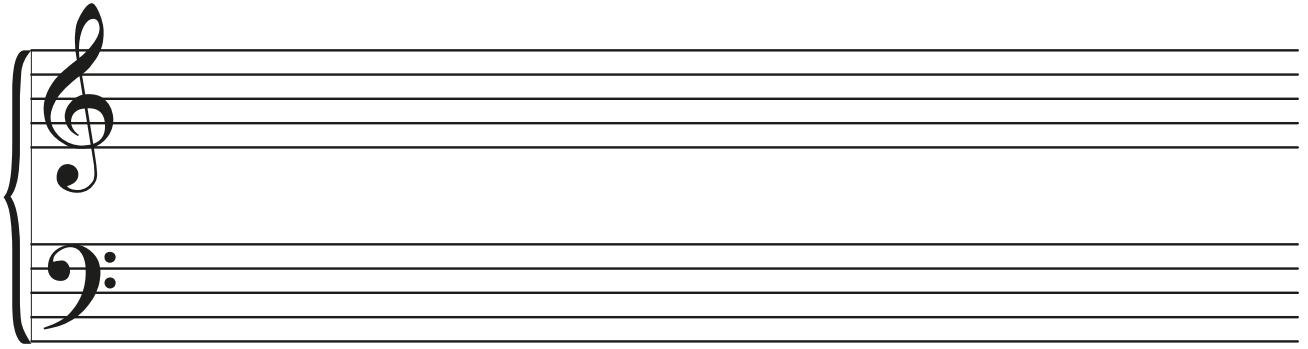


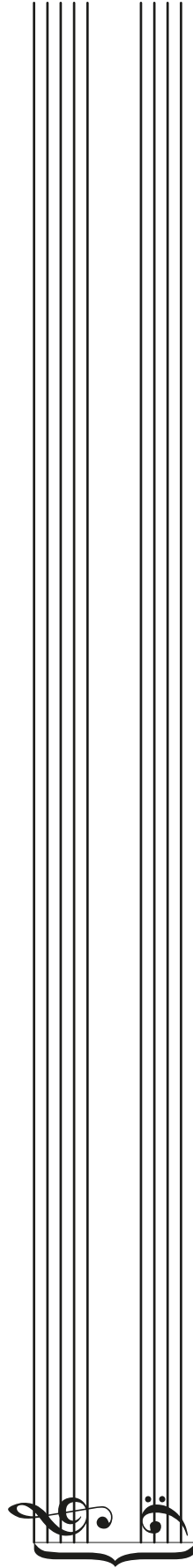
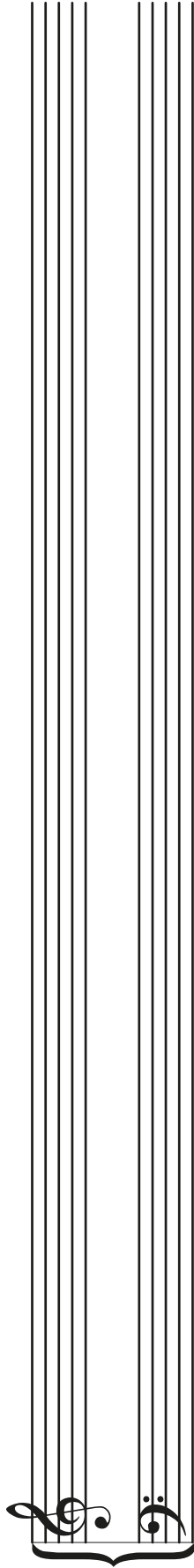
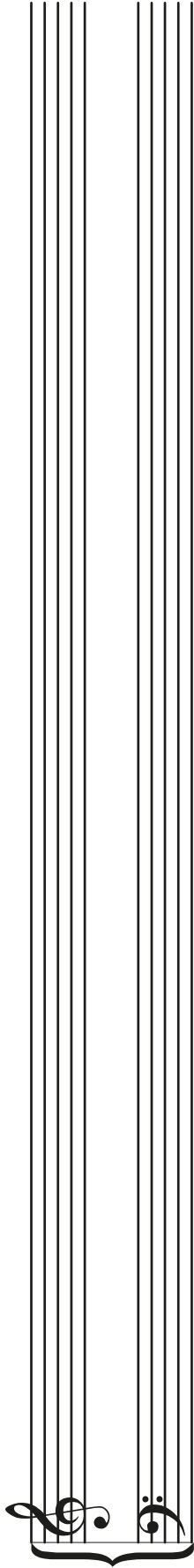
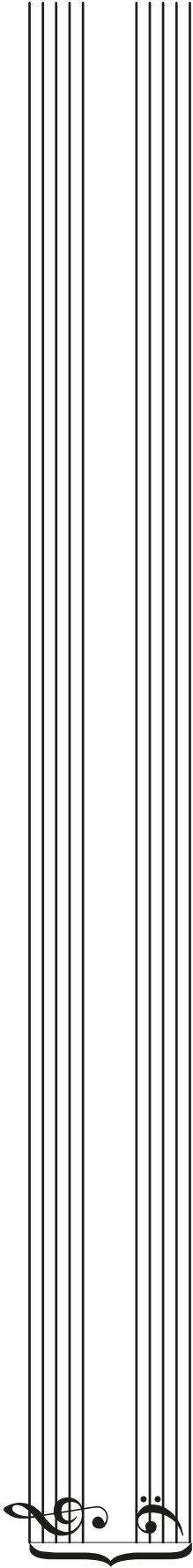


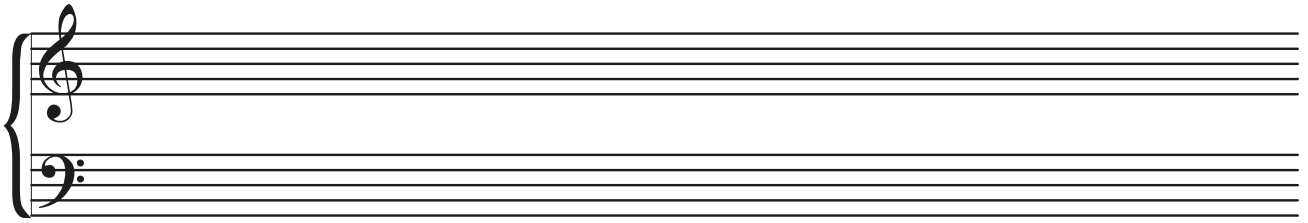
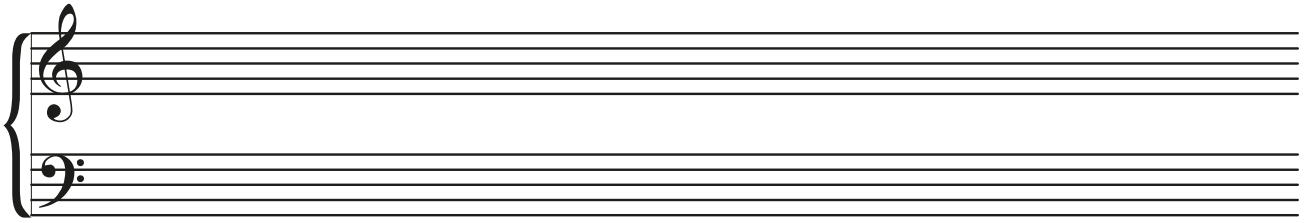
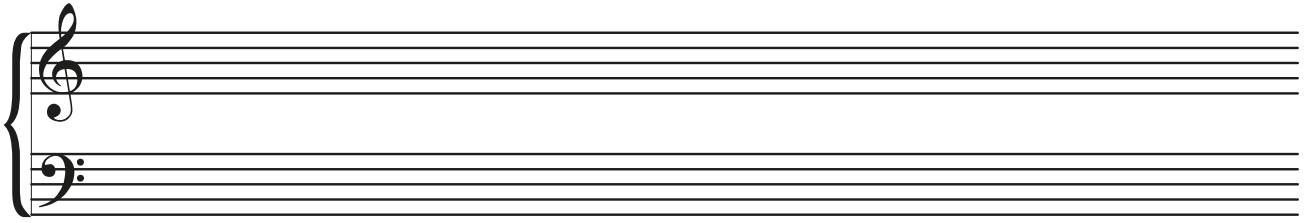
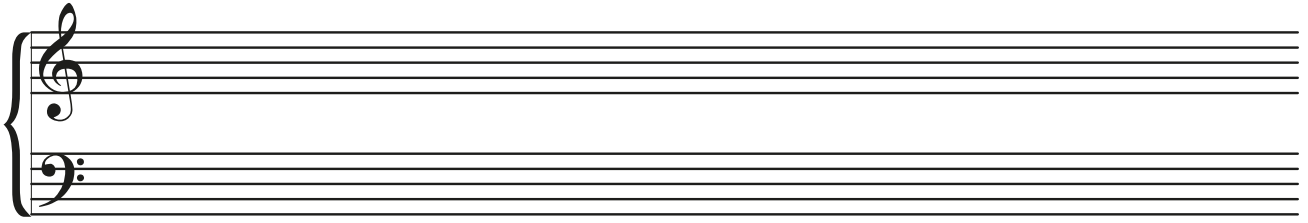
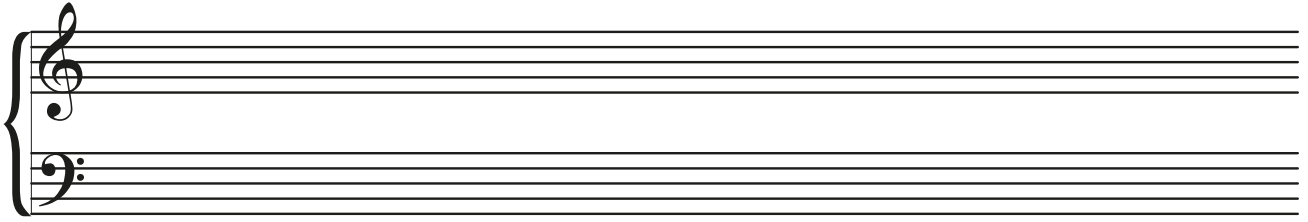


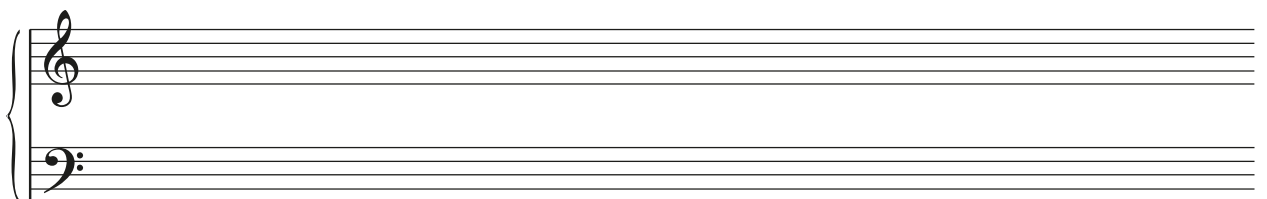
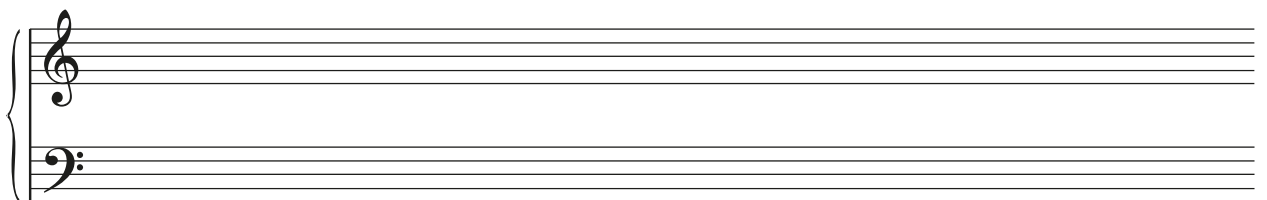
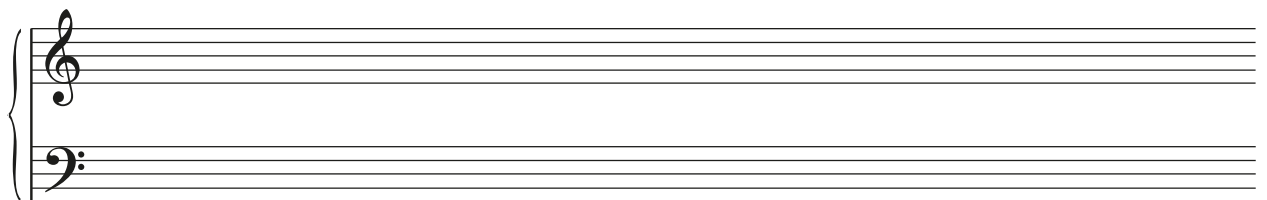
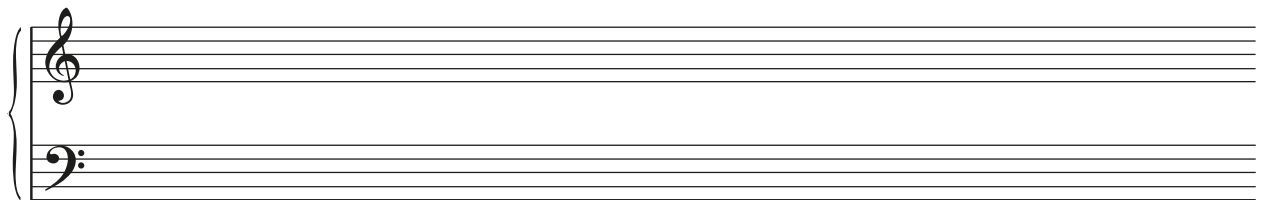
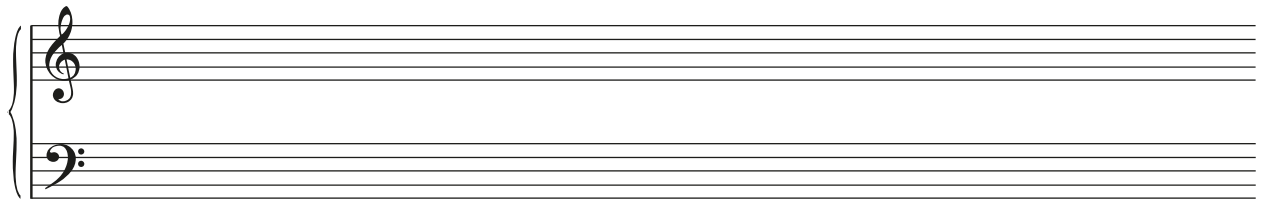
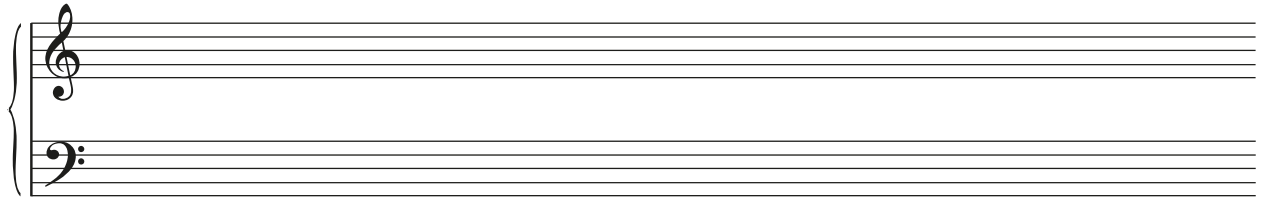


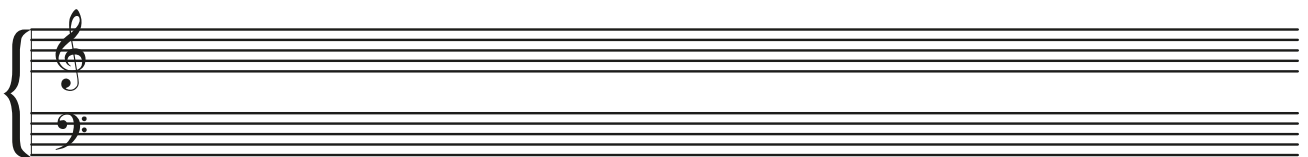
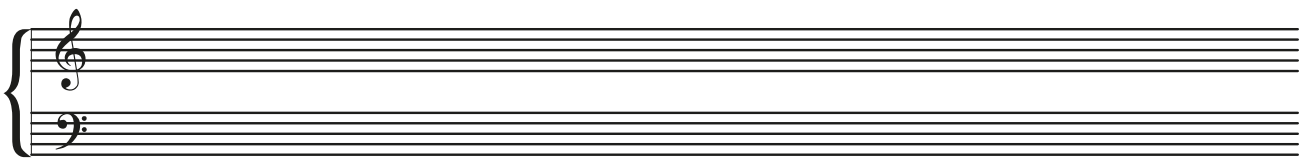
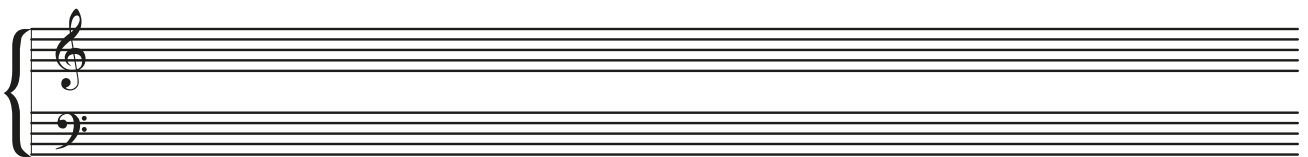
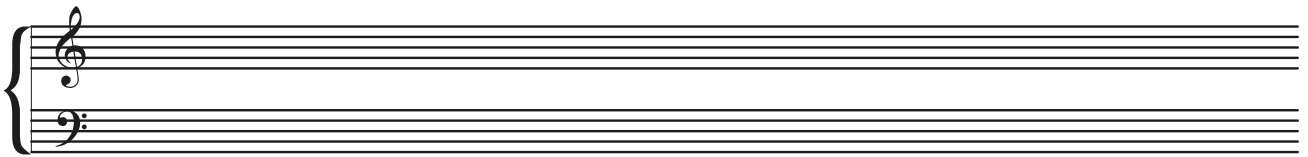
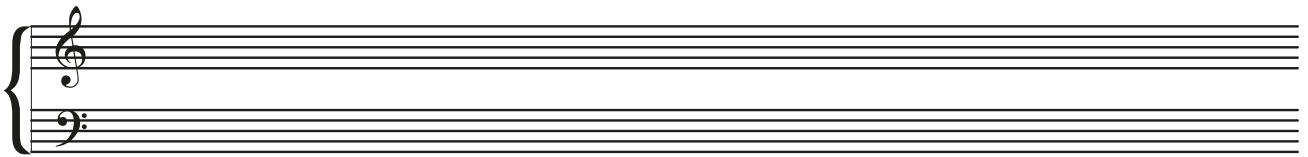
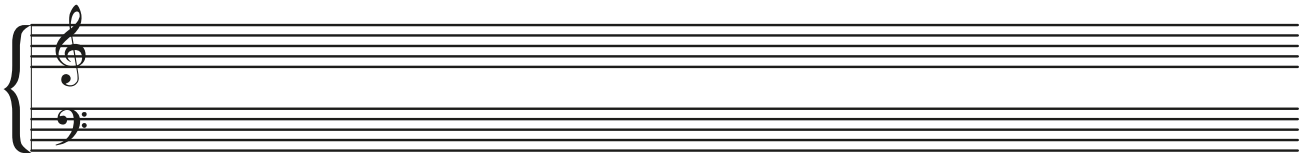
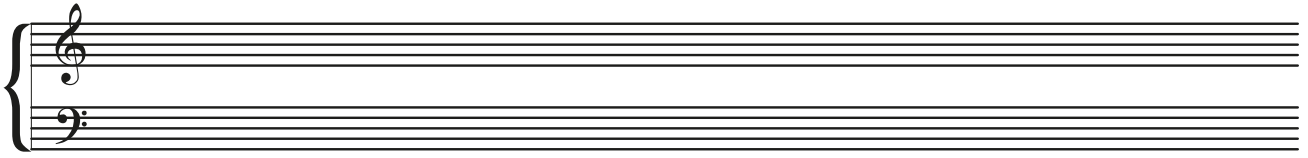
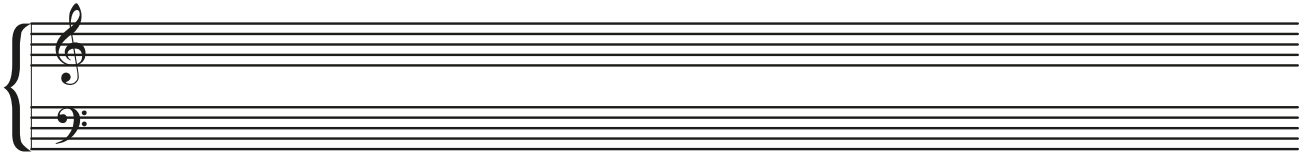


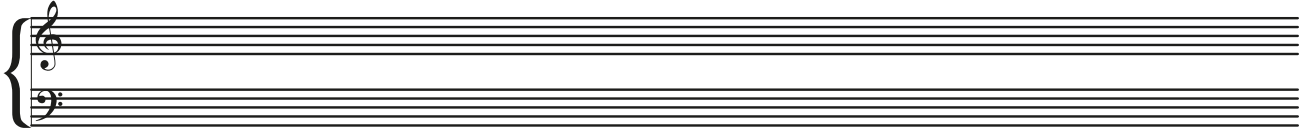


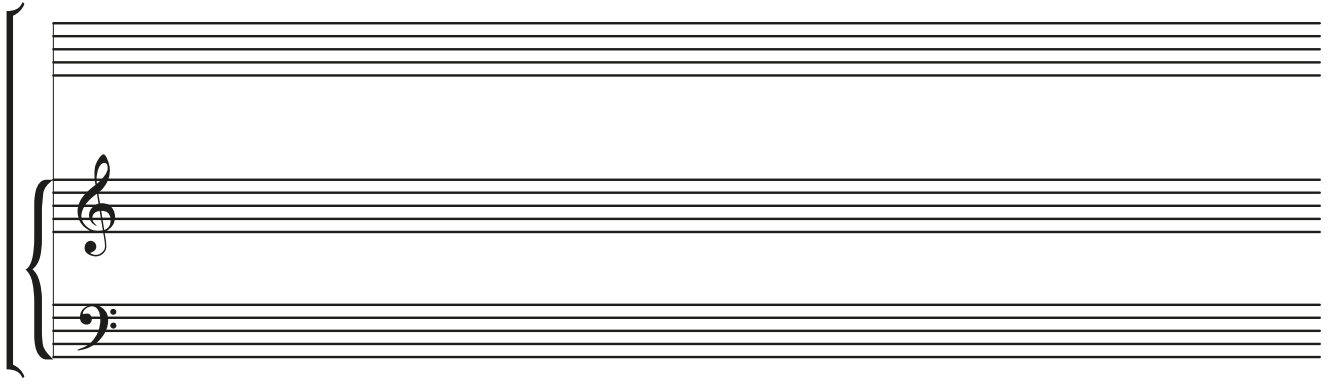




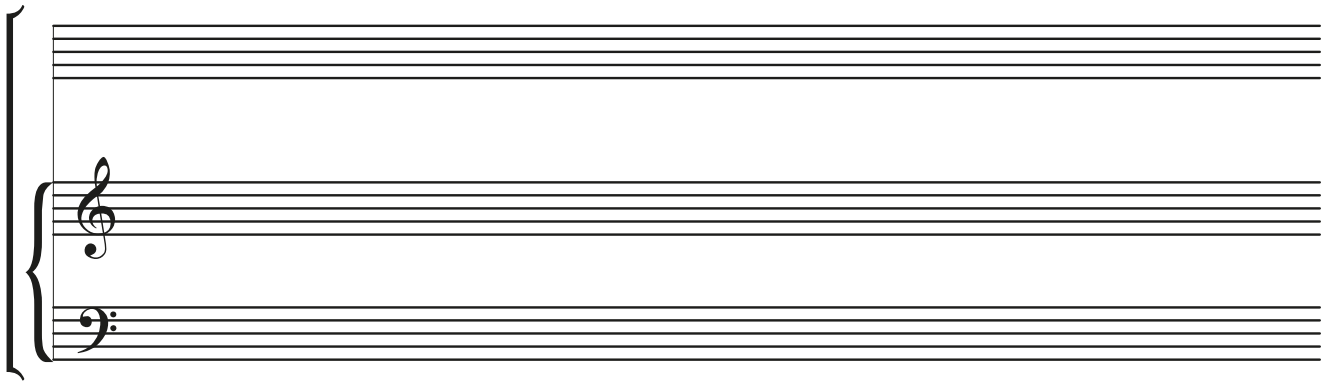








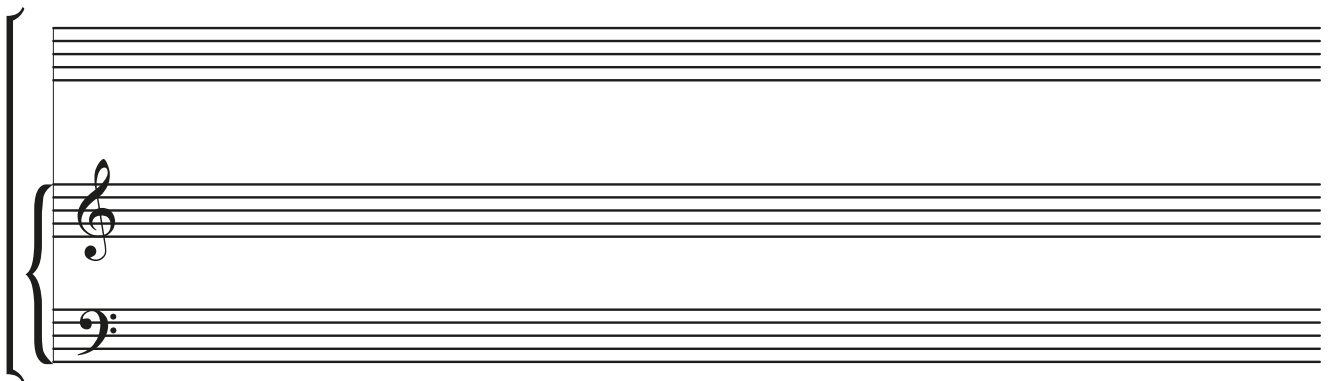
A musical staff system consisting of three staves. The top staff is blank. The middle staff has a treble clef. The bottom staff has a bass clef. A large brace on the left side groups all three staves together.



A musical staff system consisting of three staves. The top staff is blank. The middle staff has a treble clef. The bottom staff has a bass clef. A large brace on the left side groups all three staves together.

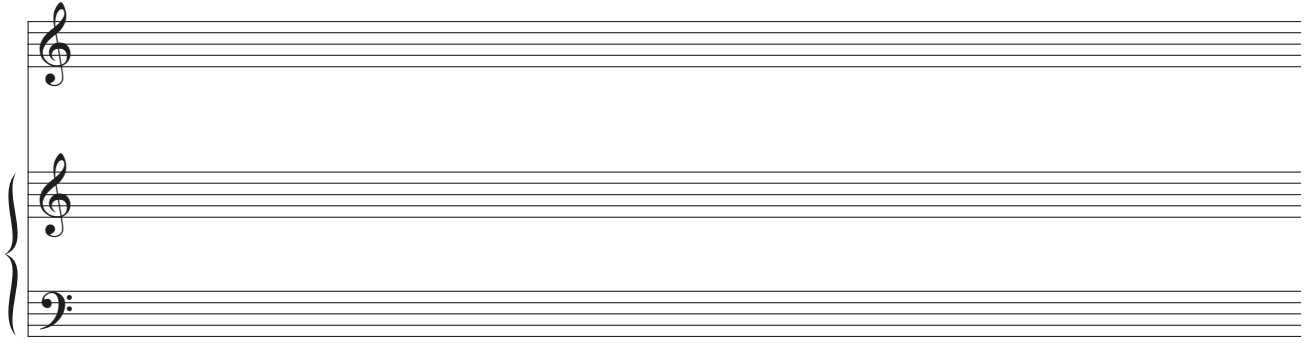


A musical staff system consisting of three staves. The top staff is blank. The middle staff has a treble clef. The bottom staff has a bass clef. A large brace on the left side groups all three staves together.

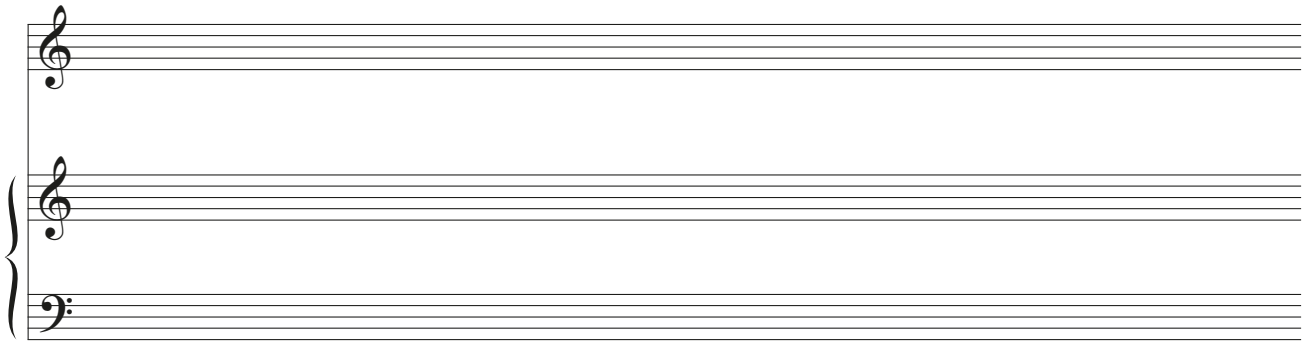


A musical staff system consisting of three staves. The top staff is blank. The middle staff has a treble clef. The bottom staff has a bass clef. A large brace on the left side groups all three staves together.

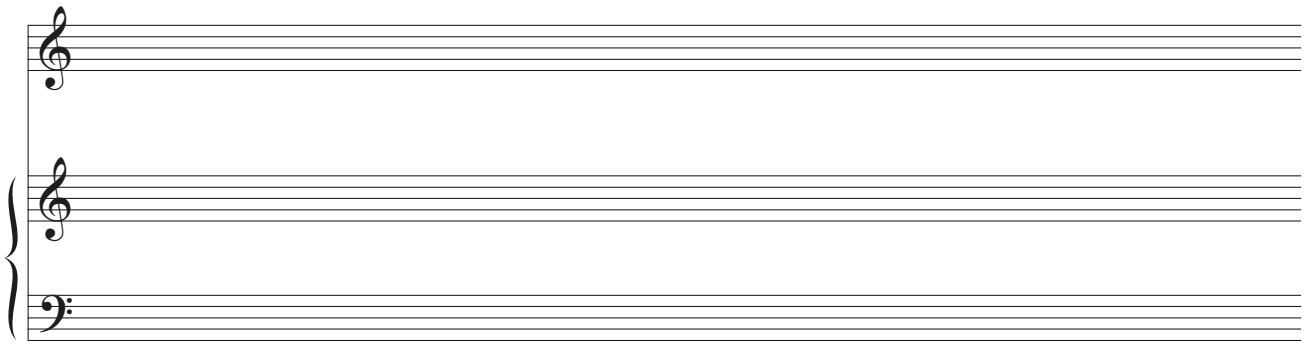




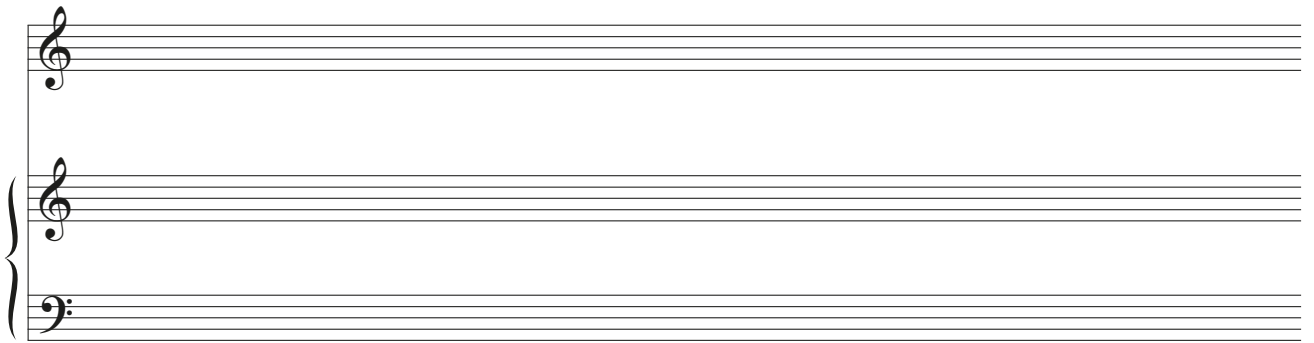
A system of four musical staves. The top staff is a single treble clef. The bottom three staves are grouped by a brace on the left and contain a treble clef, a treble clef, and a bass clef respectively.



A system of four musical staves, identical in layout to the first system.

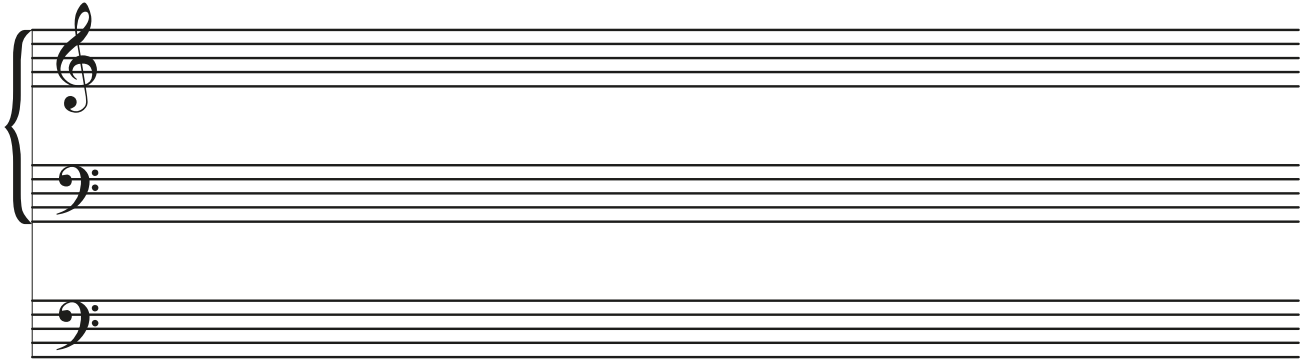


A system of four musical staves, identical in layout to the first system.

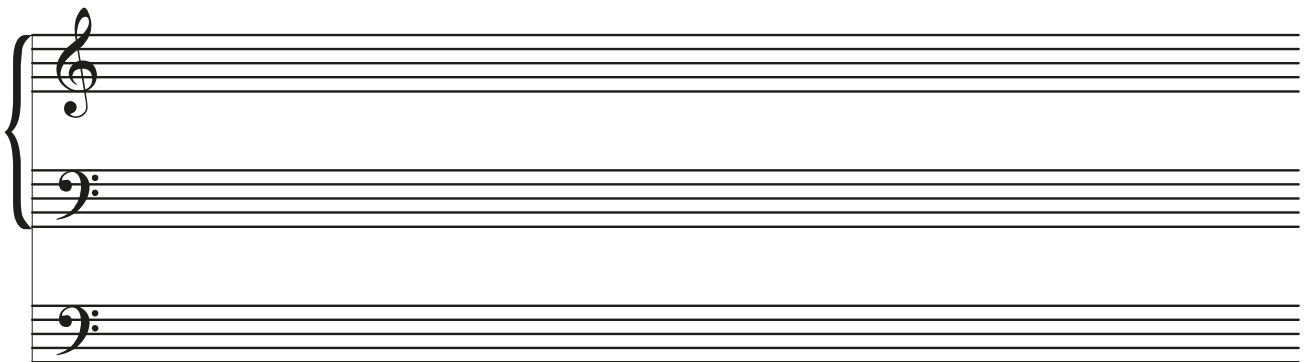


A system of four musical staves, identical in layout to the first system.

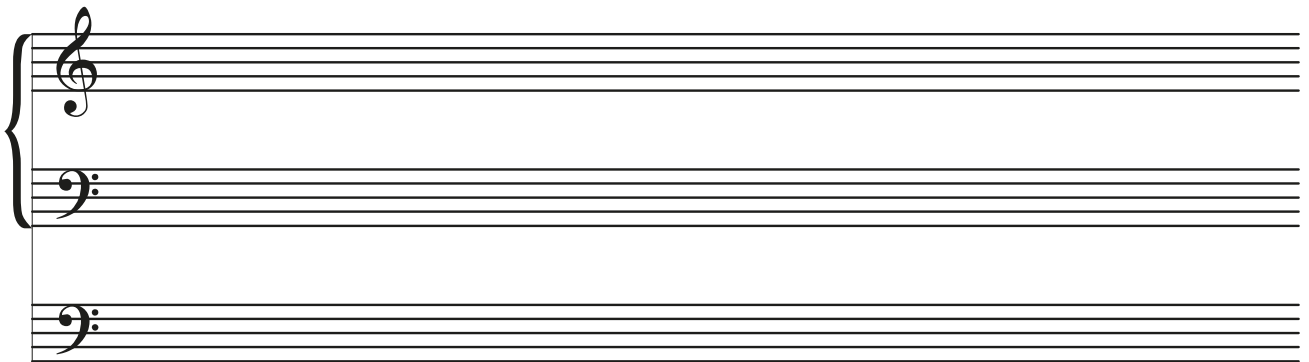




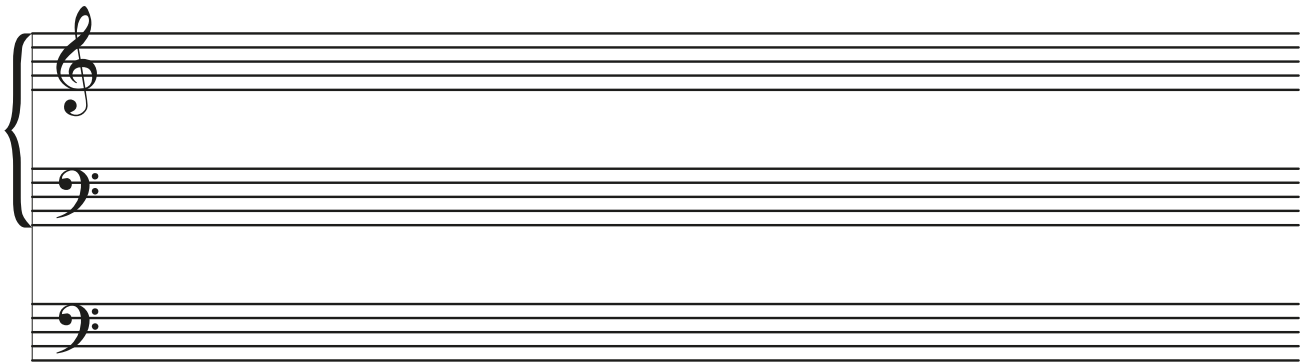
A musical staff system consisting of three staves. The top two staves are grouped by a brace on the left and contain a treble clef and a bass clef, respectively. The bottom staff contains a bass clef. All staves are empty.



A musical staff system consisting of three staves. The top two staves are grouped by a brace on the left and contain a treble clef and a bass clef, respectively. The bottom staff contains a bass clef. All staves are empty.

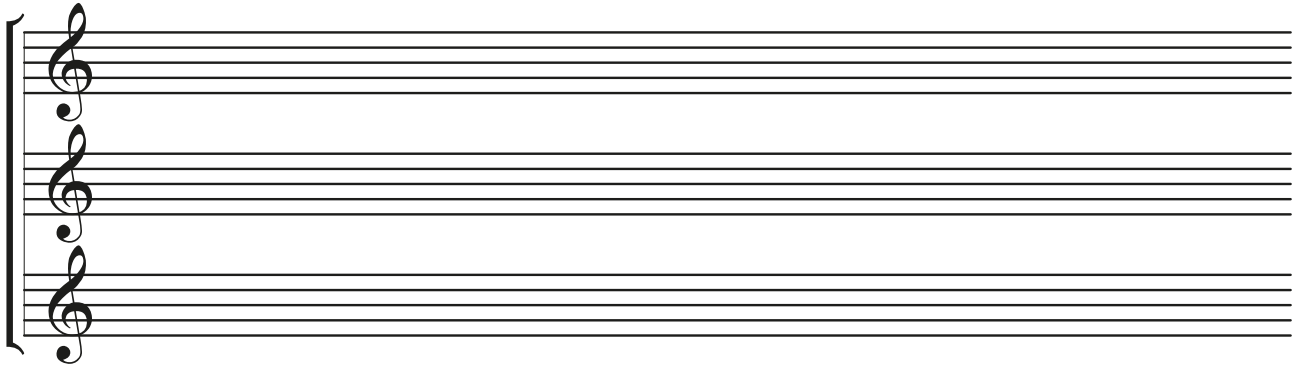
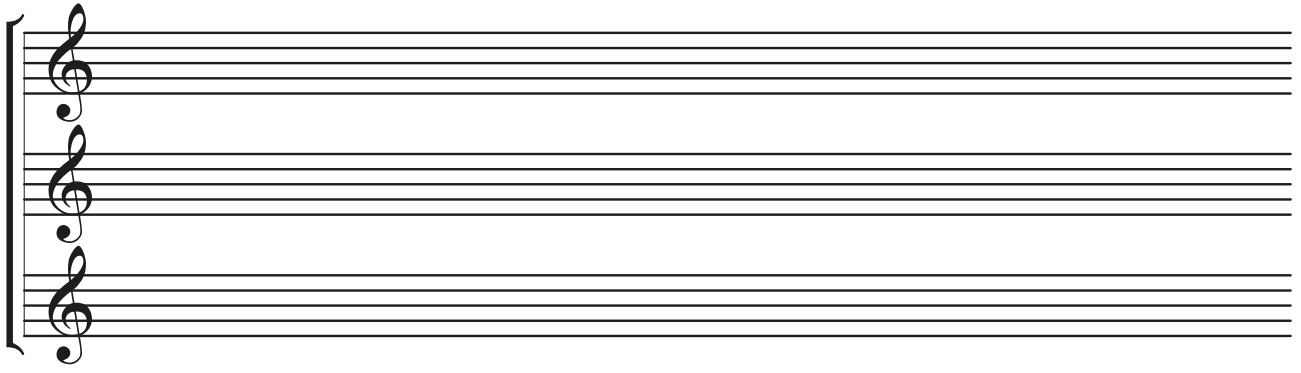
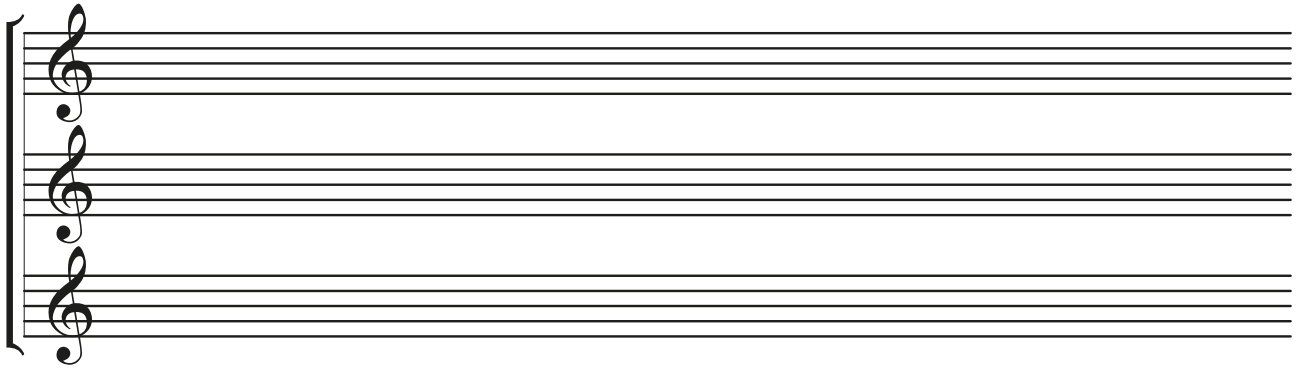
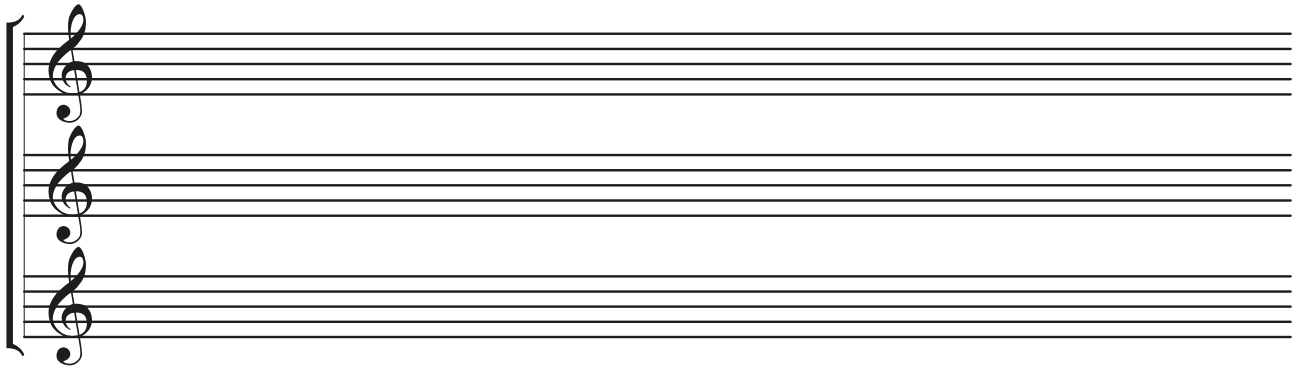


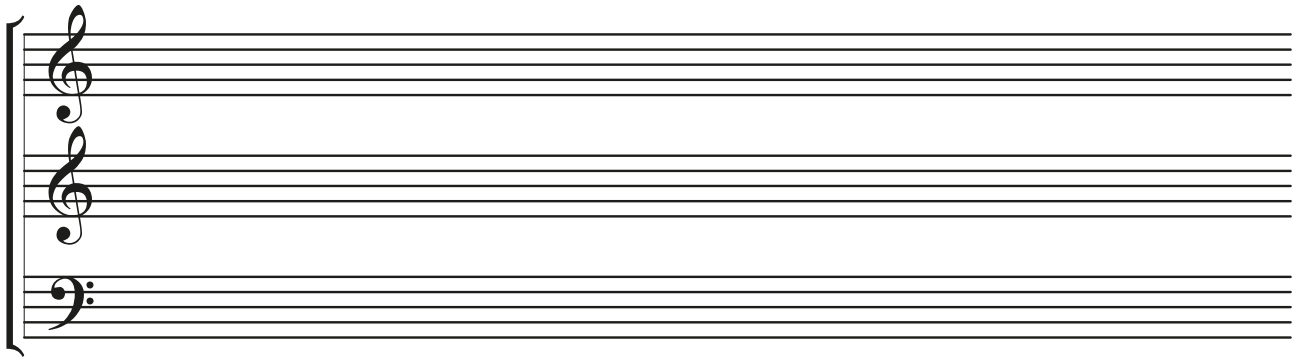
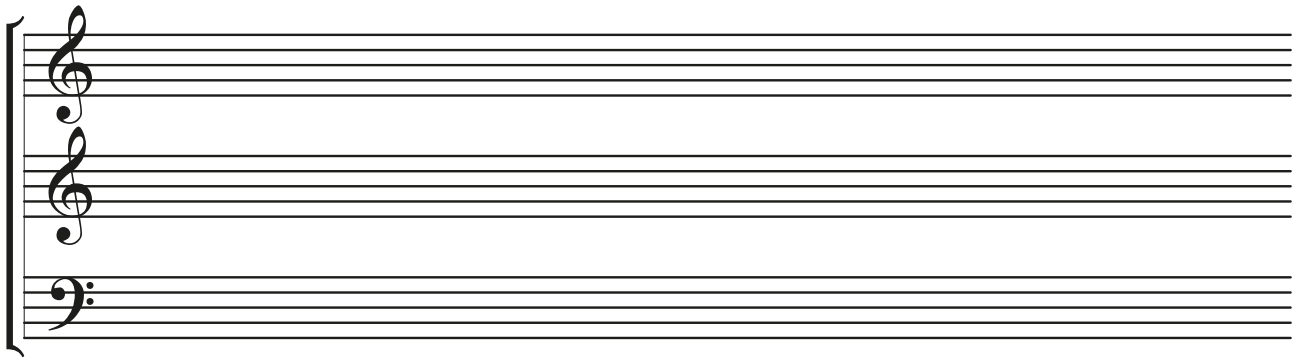
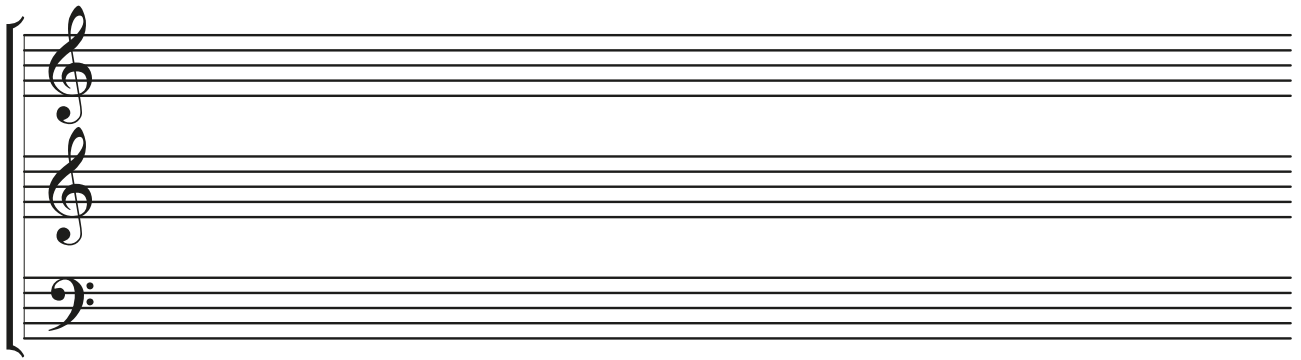
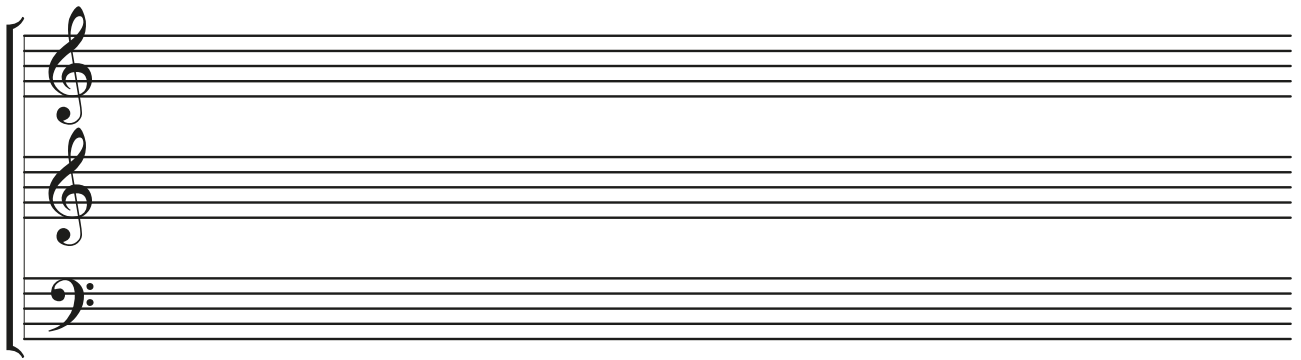
A musical staff system consisting of three staves. The top two staves are grouped by a brace on the left and contain a treble clef and a bass clef, respectively. The bottom staff contains a bass clef. All staves are empty.

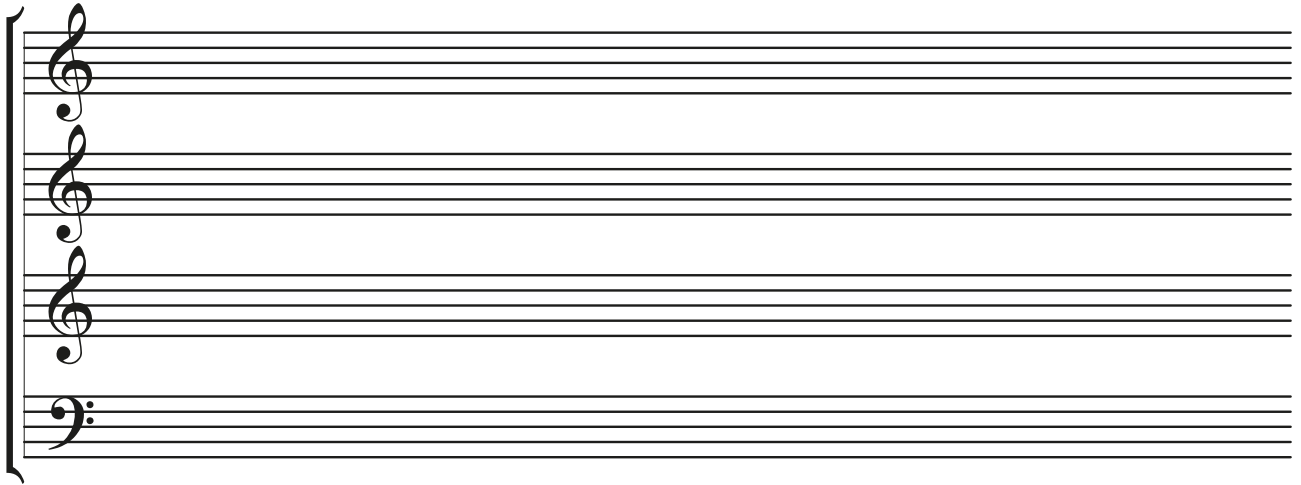


A musical staff system consisting of three staves. The top two staves are grouped by a brace on the left and contain a treble clef and a bass clef, respectively. The bottom staff contains a bass clef. All staves are empty.





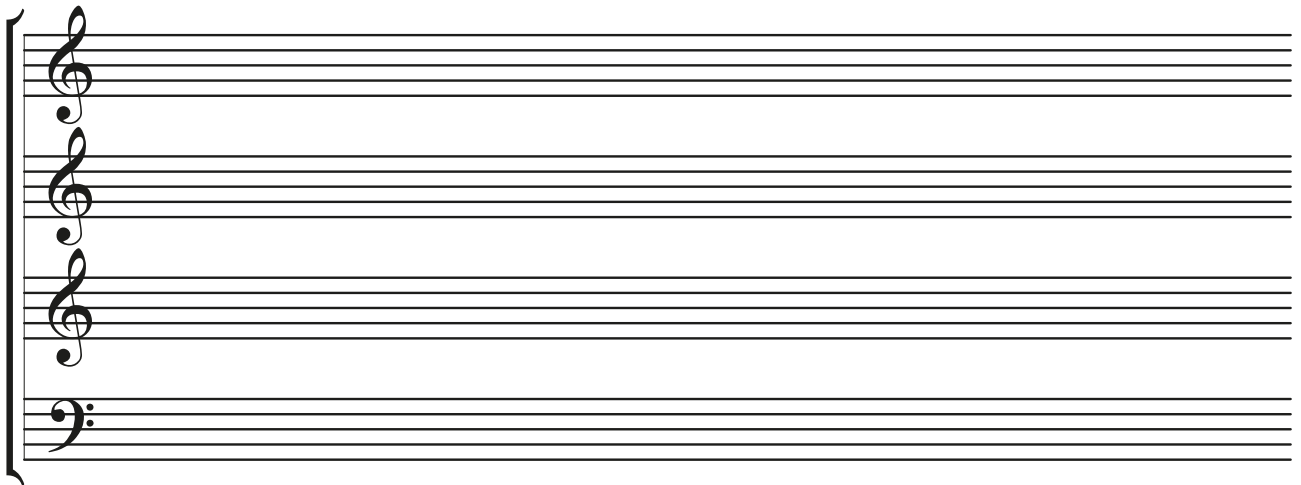




A system of four musical staves. The top three staves are grouped by a brace on the left and each begins with a treble clef. The bottom staff begins with a bass clef. All staves are empty.



A system of four musical staves. The top three staves are grouped by a brace on the left and each begins with a treble clef. The bottom staff begins with a bass clef. All staves are empty.



A system of four musical staves. The top three staves are grouped by a brace on the left and each begins with a treble clef. The bottom staff begins with a bass clef. All staves are empty.

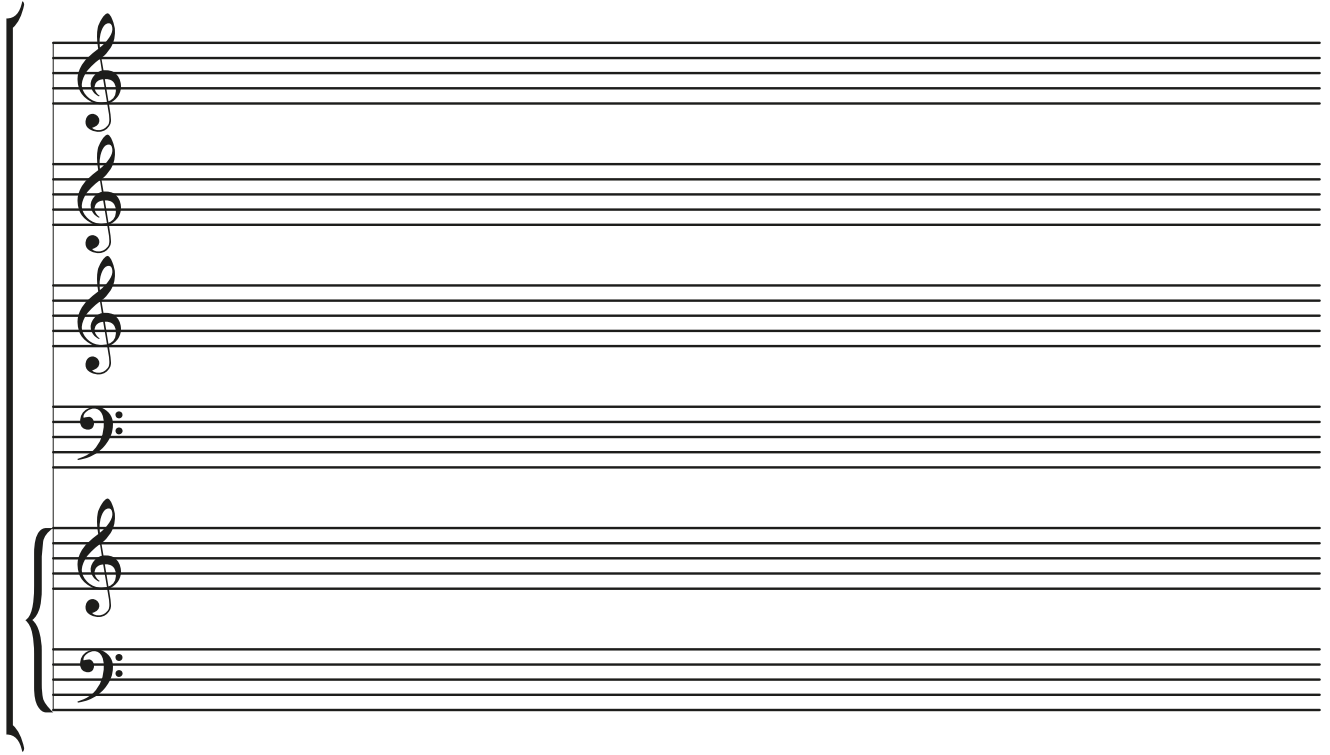


Handwritten musical notation on a five-line staff, including a treble clef, a key signature of one sharp (F#), and a common time signature (C). The notation is partially obscured by a large, faint watermark.

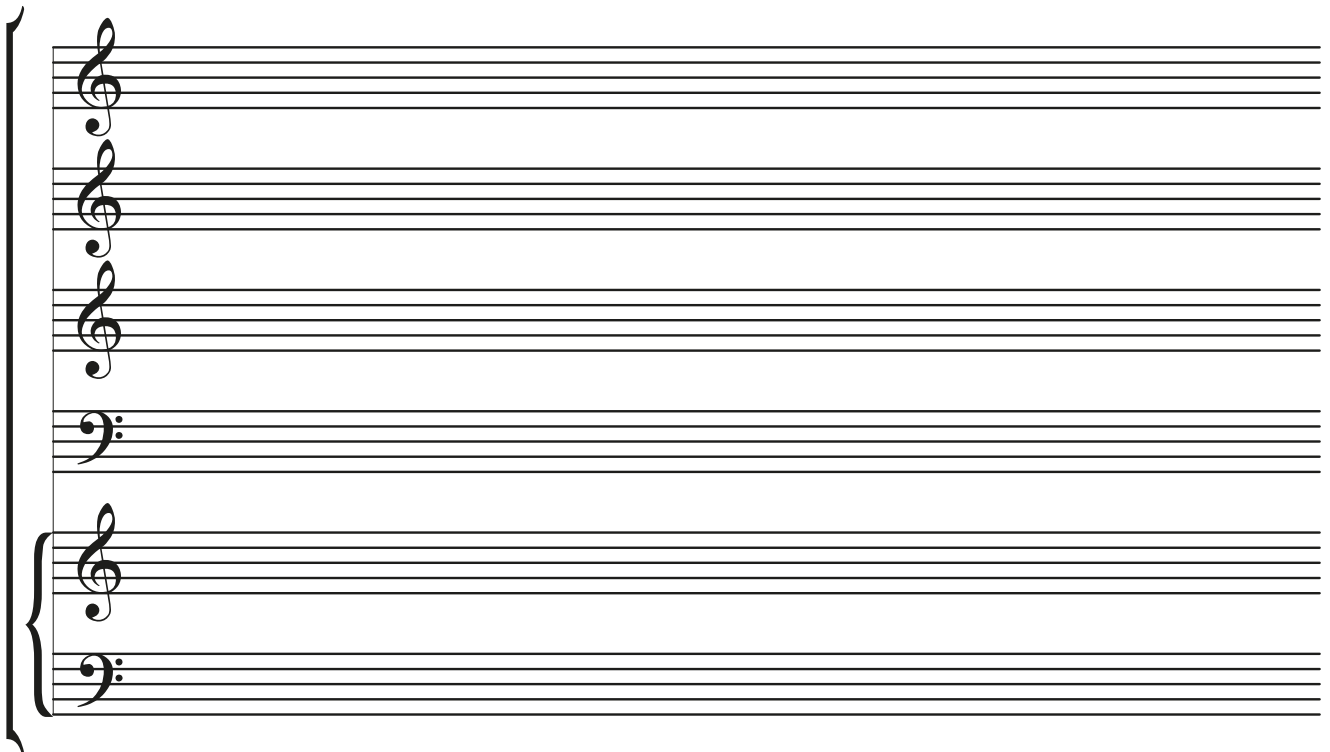
Handwritten musical notation on a five-line staff, including a treble clef, a key signature of one sharp (F#), and a common time signature (C). The notation is partially obscured by a large, faint watermark.

Handwritten musical notation on a five-line staff, including a treble clef, a key signature of one sharp (F#), and a common time signature (C). The notation is partially obscured by a large, faint watermark.



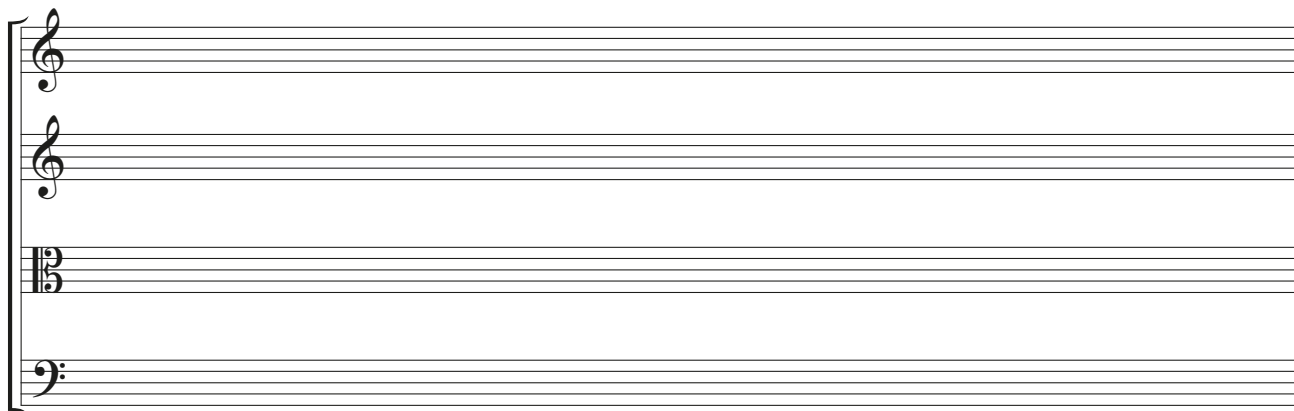


A musical staff system consisting of two grand staves. The top grand staff contains two treble clefs, and the bottom grand staff contains two bass clefs. All staves are empty.




A second musical staff system, identical in structure to the first, with two grand staves (treble and bass clefs) and empty staves.






A system of four musical staves. The top two staves are connected by a brace and feature treble clefs. The third staff has an alto clef, and the bottom staff has a bass clef. All staves are empty.



A system of four musical staves. The top two staves are connected by a brace and feature treble clefs. The third staff has an alto clef, and the bottom staff has a bass clef. All staves are empty.



A system of four musical staves. The top two staves are connected by a brace and feature treble clefs. The third staff has an alto clef, and the bottom staff has a bass clef. All staves are empty.



A system of four musical staves. The top two staves are connected by a brace and feature treble clefs. The third staff has an alto clef, and the bottom staff has a bass clef. All staves are empty.



T
A
B

T
A
B

T
A
B

T
A
B

T
A
B

T
A
B



T
A
B

T
A
B

T
A
B

T
A
B

T
A
B

T
A
B



**T
A
B**

**T
A
B**

**T
A
B**

**T
A
B**

**T
A
B**

**T
A
B**



Musical staff with a treble clef and TAB notation.

Musical staff with a treble clef and TAB notation.

Musical staff with a treble clef and TAB notation.

Musical staff with a treble clef and TAB notation.



T
A
B

T
A
B

T
A
B

T
A
B

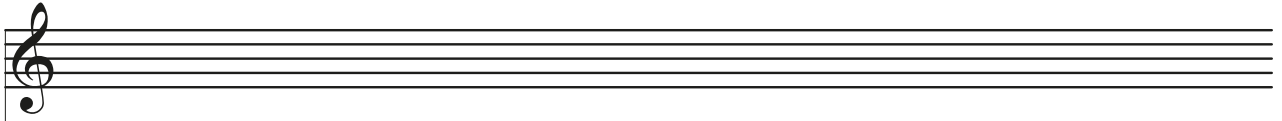
T
A
B

T
A
B

T
A
B

T
A
B





**T
A
B**



**T
A
B**



**T
A
B**



**T
A
B**



**T
A
B**

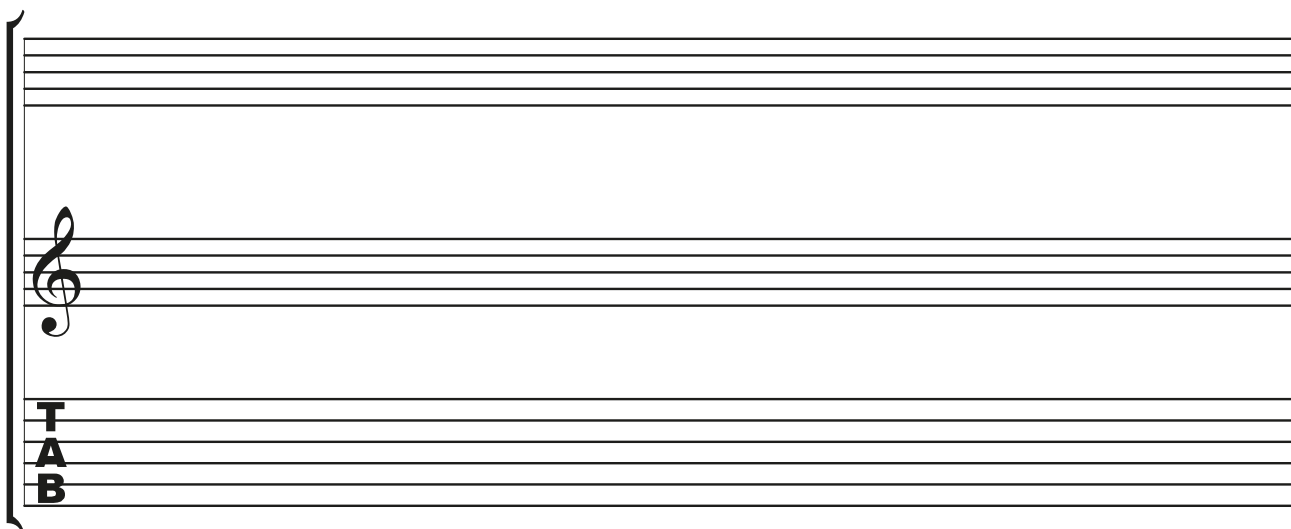


**T
A
B**

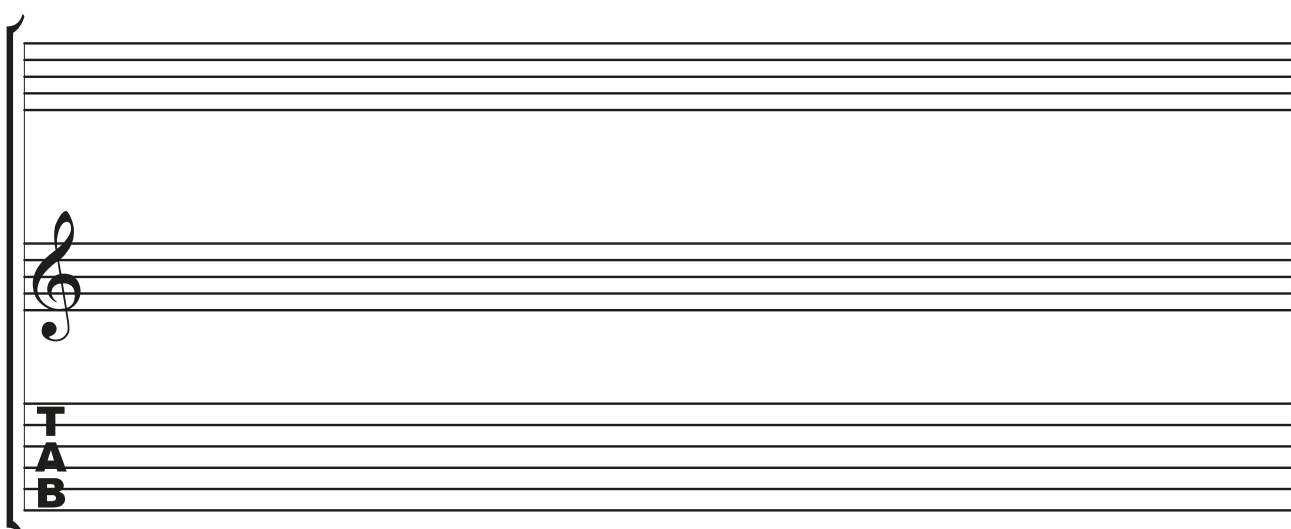




A musical staff system consisting of two sets of five-line staves. The top set of staves is empty. The bottom set of staves begins with a treble clef on the left. Below the treble clef, the letters 'T', 'A', and 'B' are stacked vertically, indicating a guitar tablature section. The rest of the staves in this system are empty.



A musical staff system consisting of two sets of five-line staves. The top set of staves is empty. The bottom set of staves begins with a treble clef on the left. Below the treble clef, the letters 'T', 'A', and 'B' are stacked vertically, indicating a guitar tablature section. The rest of the staves in this system are empty.



A musical staff system consisting of two sets of five-line staves. The top set of staves is empty. The bottom set of staves begins with a treble clef on the left. Below the treble clef, the letters 'T', 'A', and 'B' are stacked vertically, indicating a guitar tablature section. The rest of the staves in this system are empty.



Bass clef staff
TAB

Bass clef staff
TAB

Bass clef staff
TAB

Bass clef staff
TAB



Blank musical staff system with a treble clef, a bass clef, and a TAB section.

Blank musical staff system with a treble clef, a bass clef, and a TAB section.

Blank musical staff system with a treble clef, a bass clef, and a TAB section.

